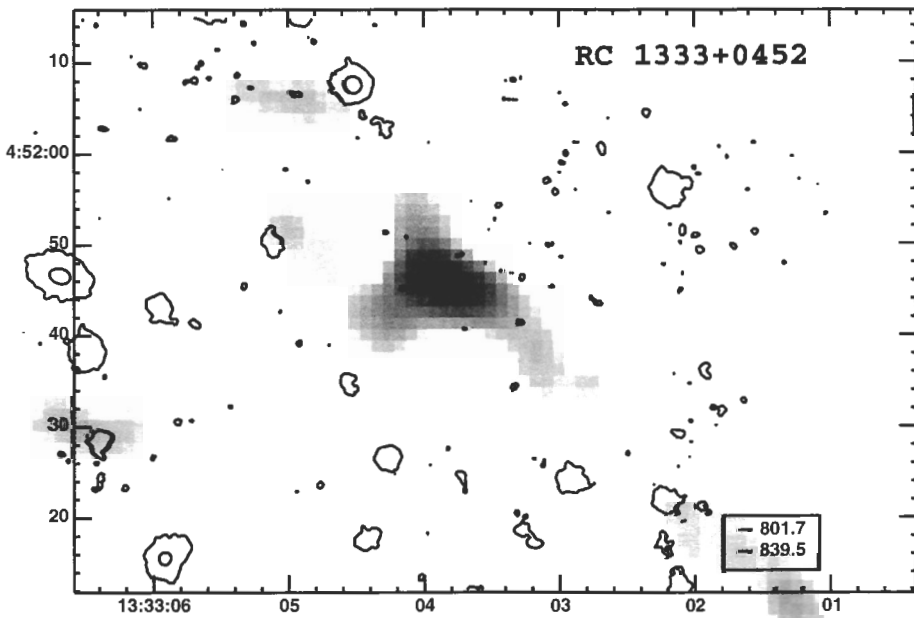
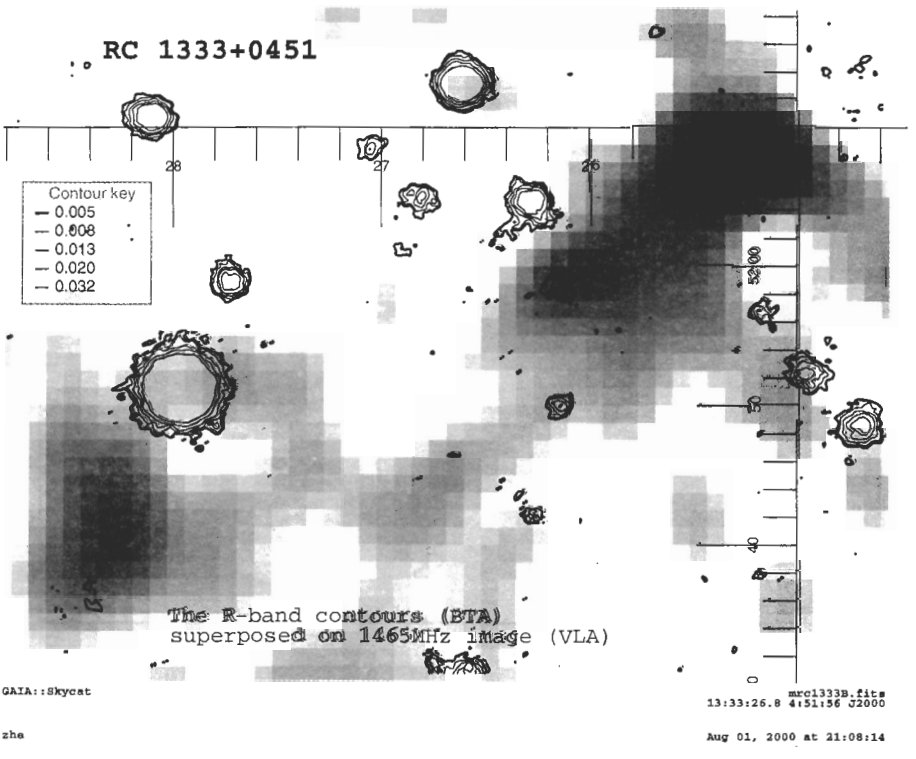
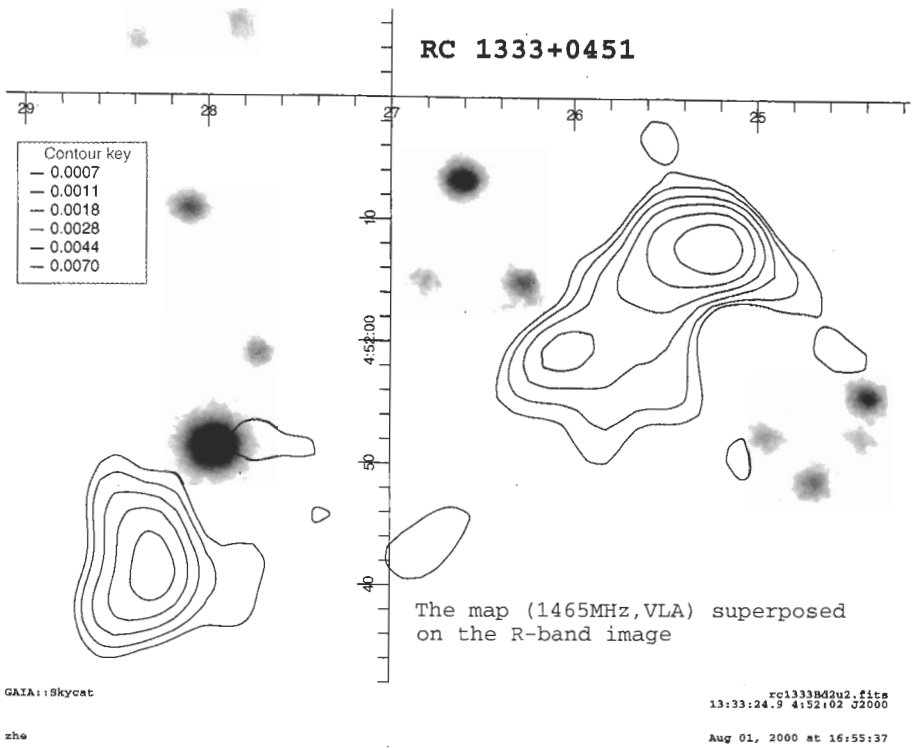
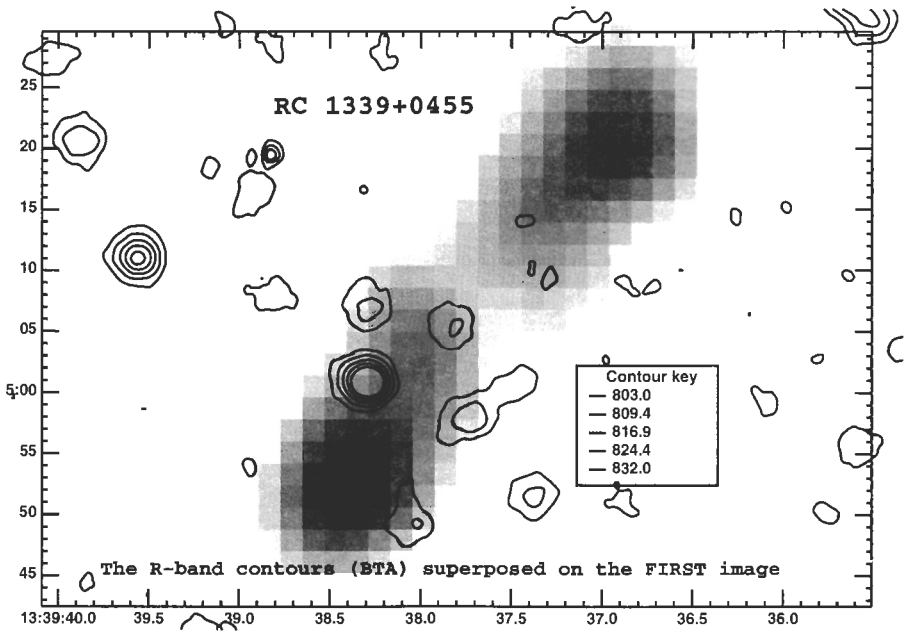
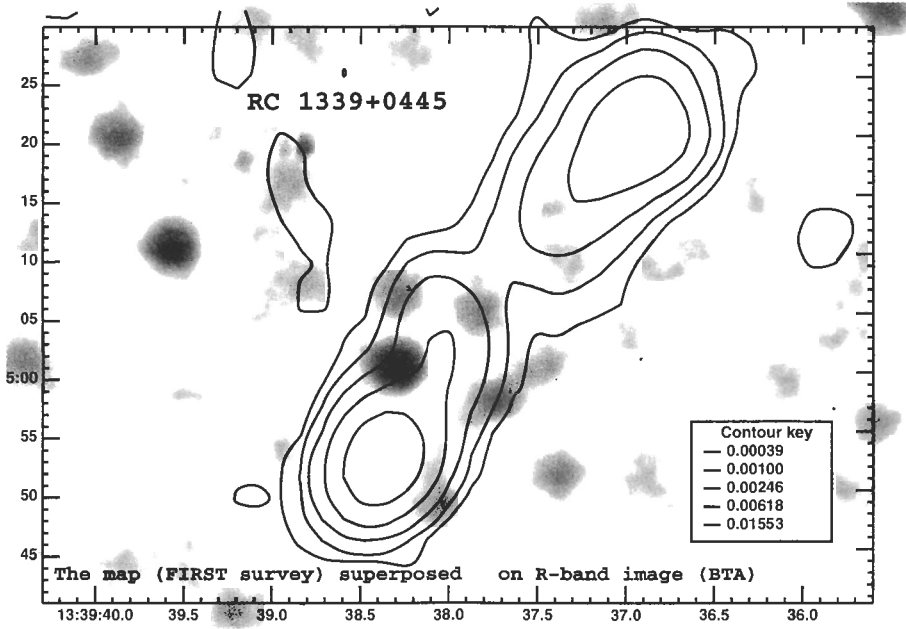


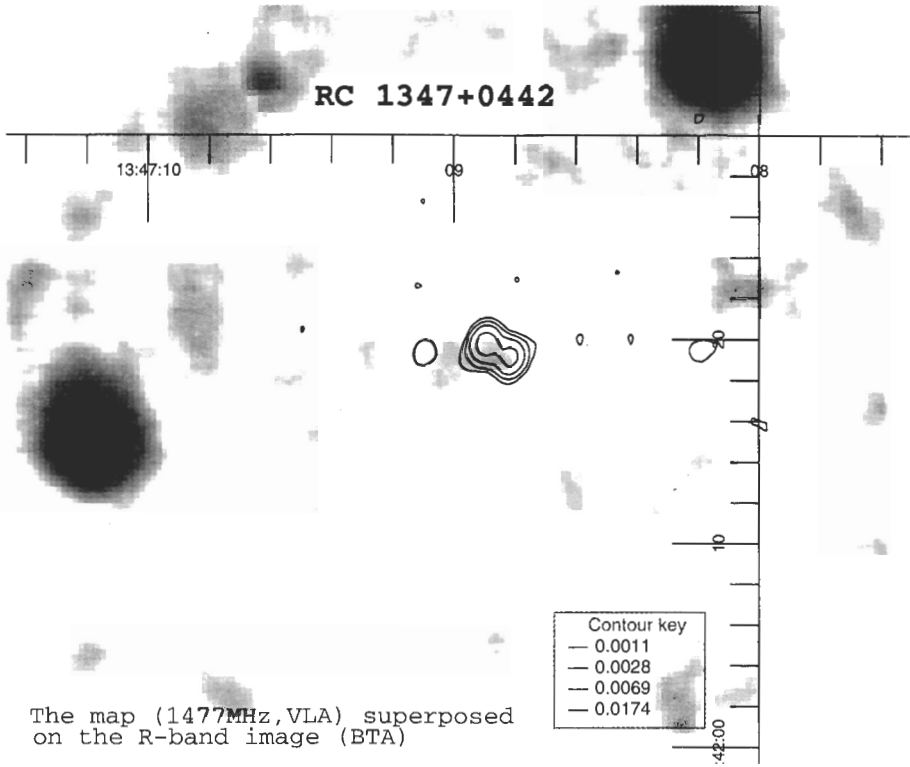
The map (1465MHz, VLA) superposed on the R-band image (BTA)



The R-band contours (BTA) superposed on 1465MHz image (BTA)





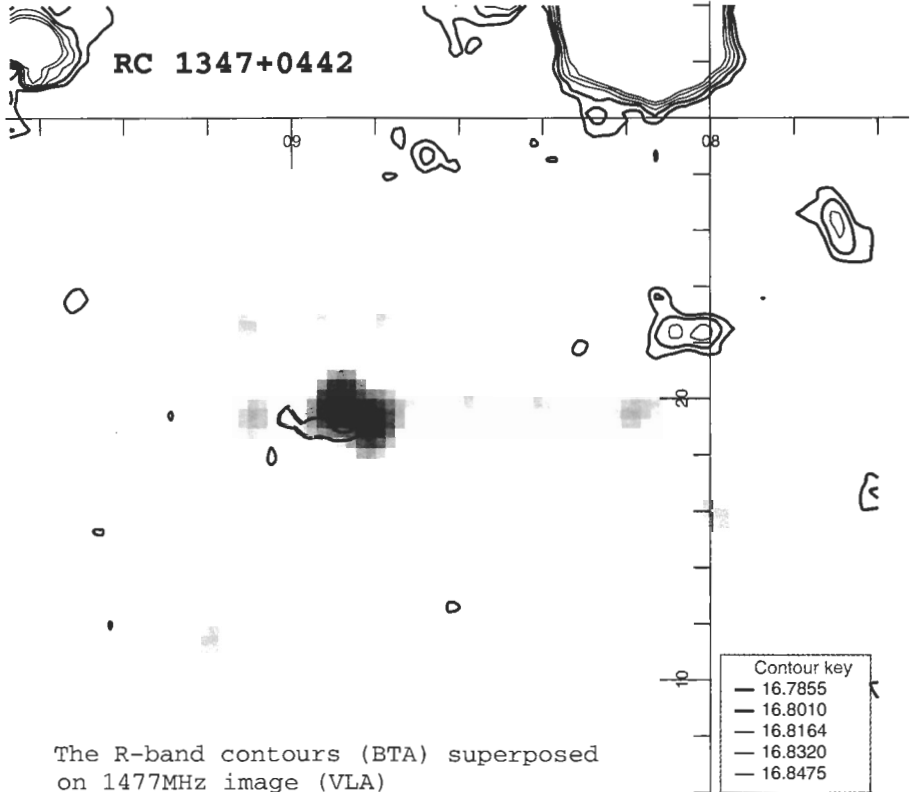


GAIA::Skycat

rc1347d2u2.fits
13:47:08.8 4:42:23 J2000

zhe

Jul 30, 2000 at 11:13:41

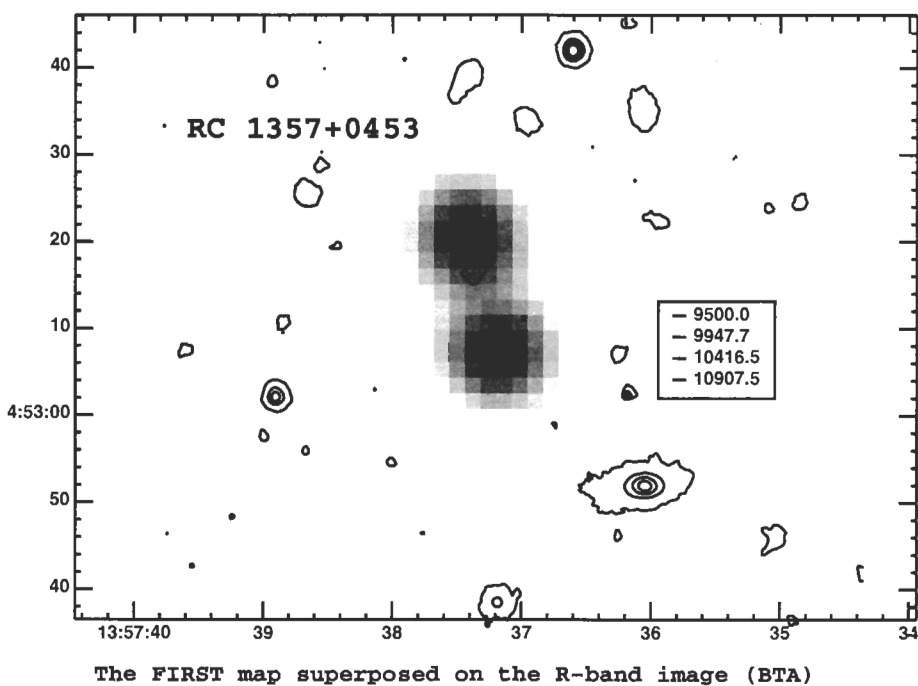
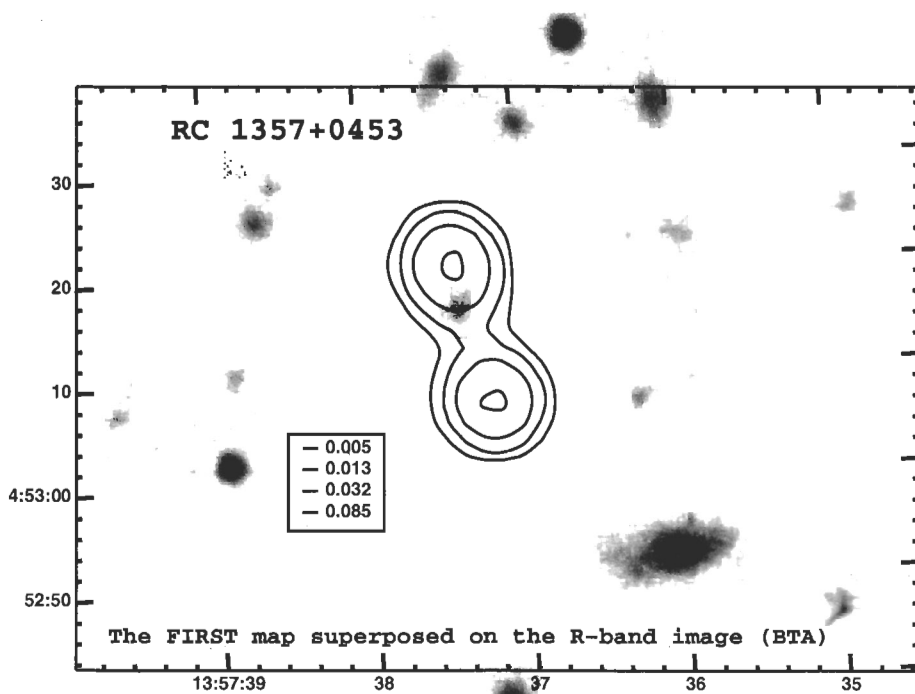


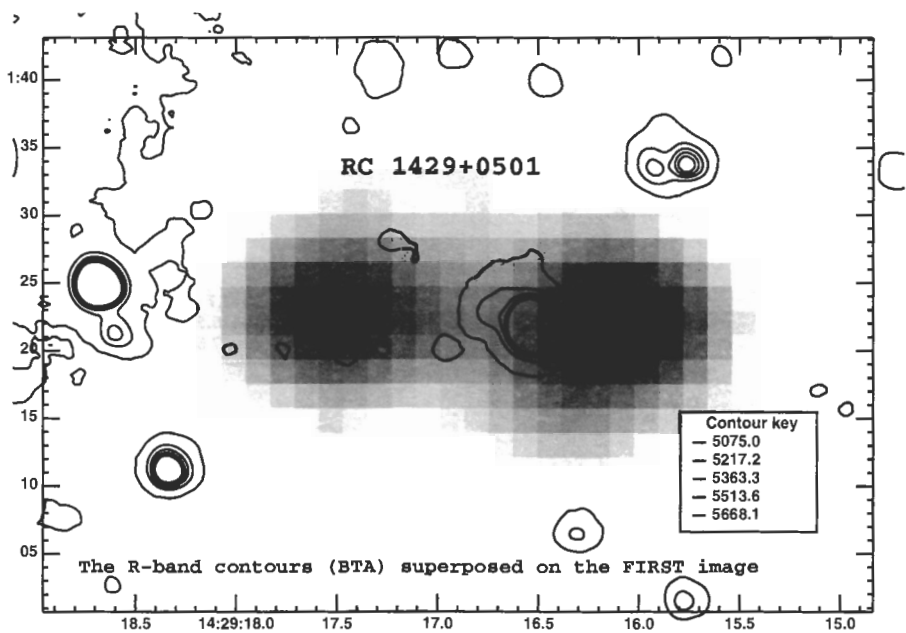
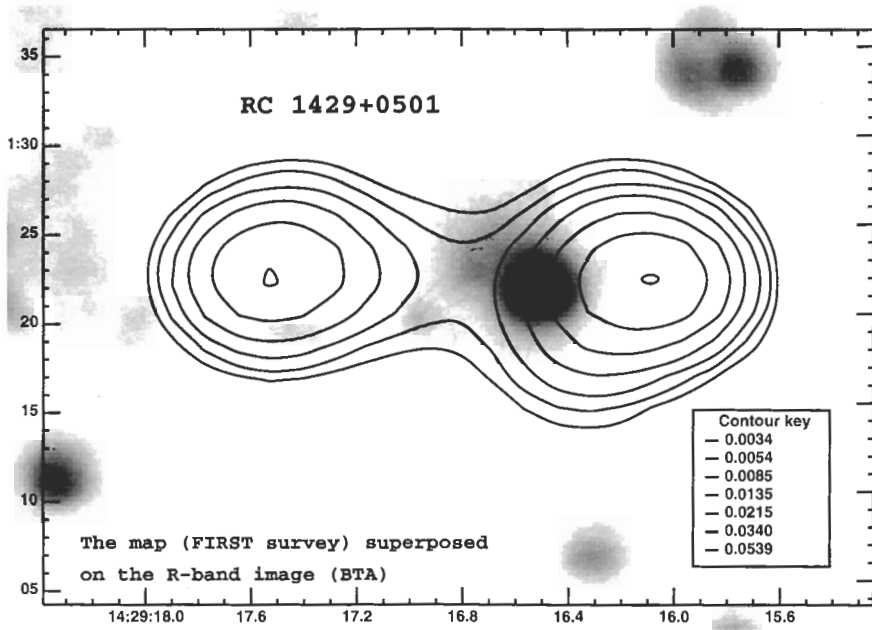
GAIA::Skycat

rm1347J.fits
13:47:08.8 4:42:19 J2000

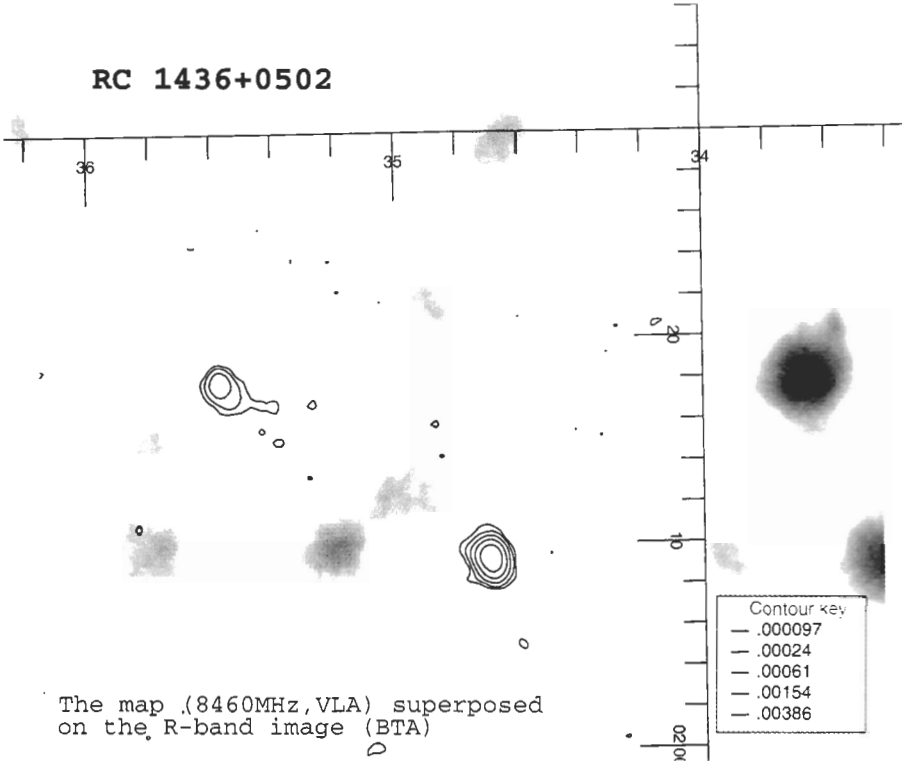
zhe

Jul 30, 2000 at 13:38:29





RC 1436+0502



The map (8460MHz, VLA) superposed on the R-band image (BTA)

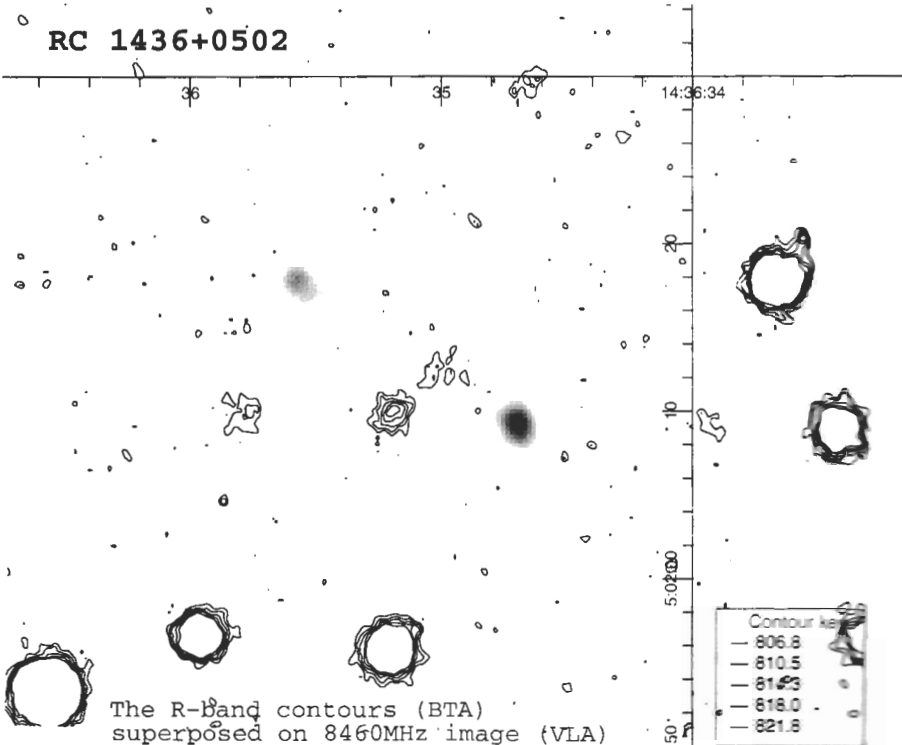
GAIA::Skycat

14:36:36.0 5:02:08 05000

zbe

Jul 31, 2000 at 15:33:15

RC 1436+0502



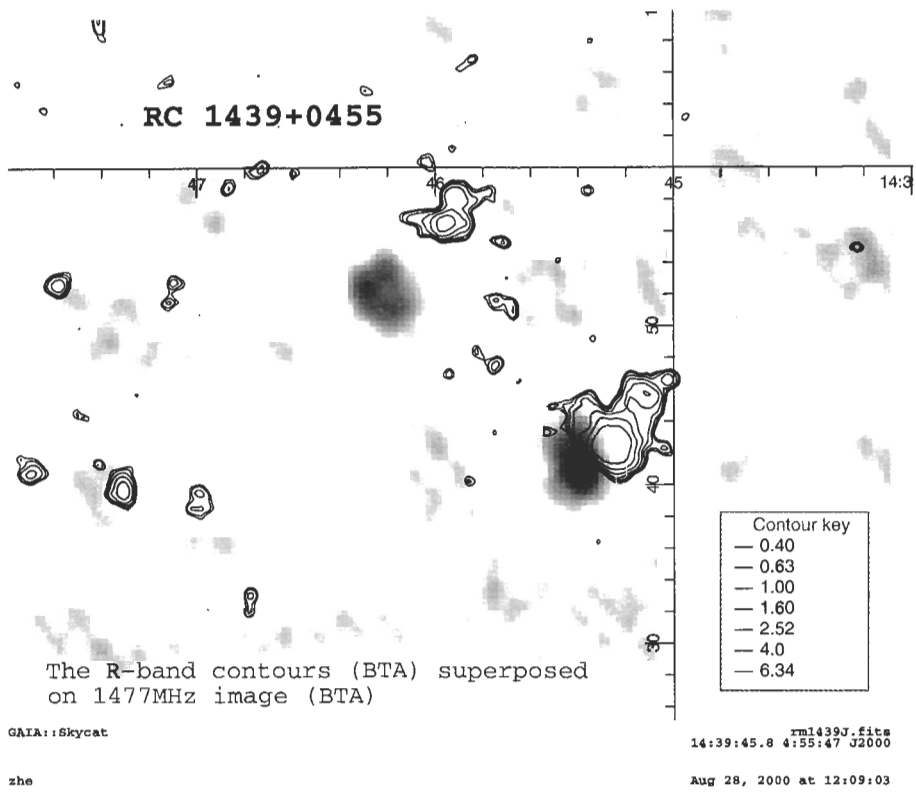
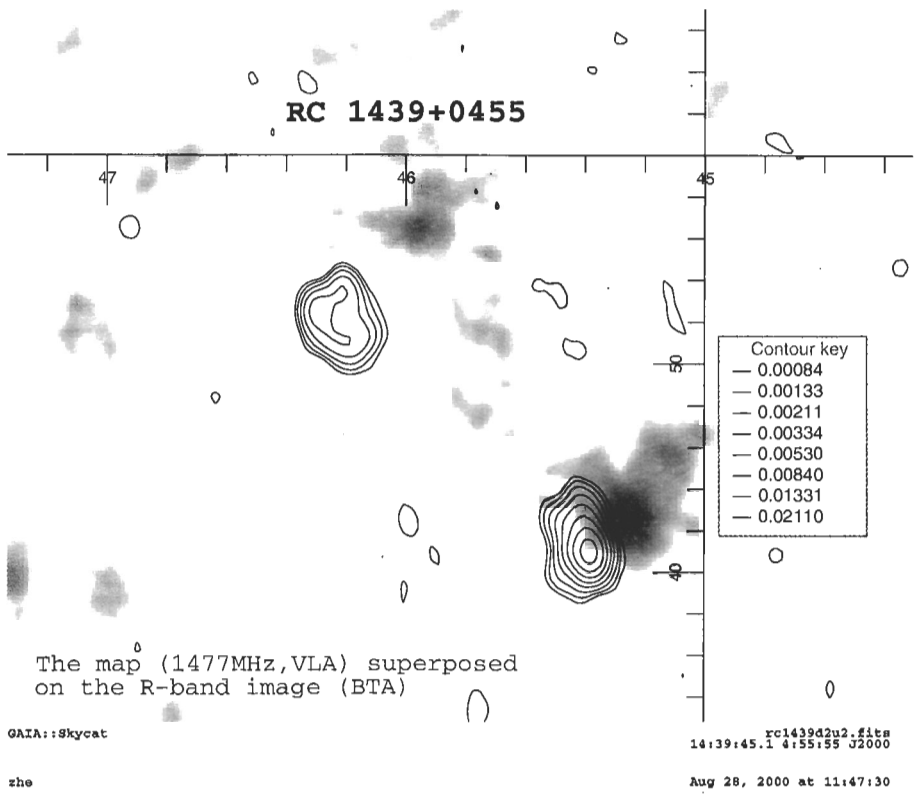
The R-band contours (BTA) superposed on 8460MHz image (VLA)

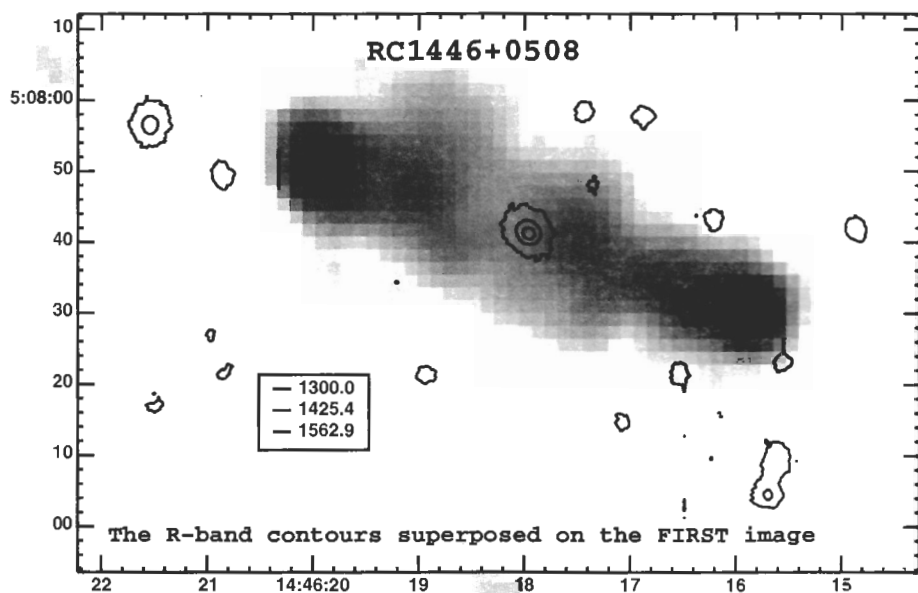
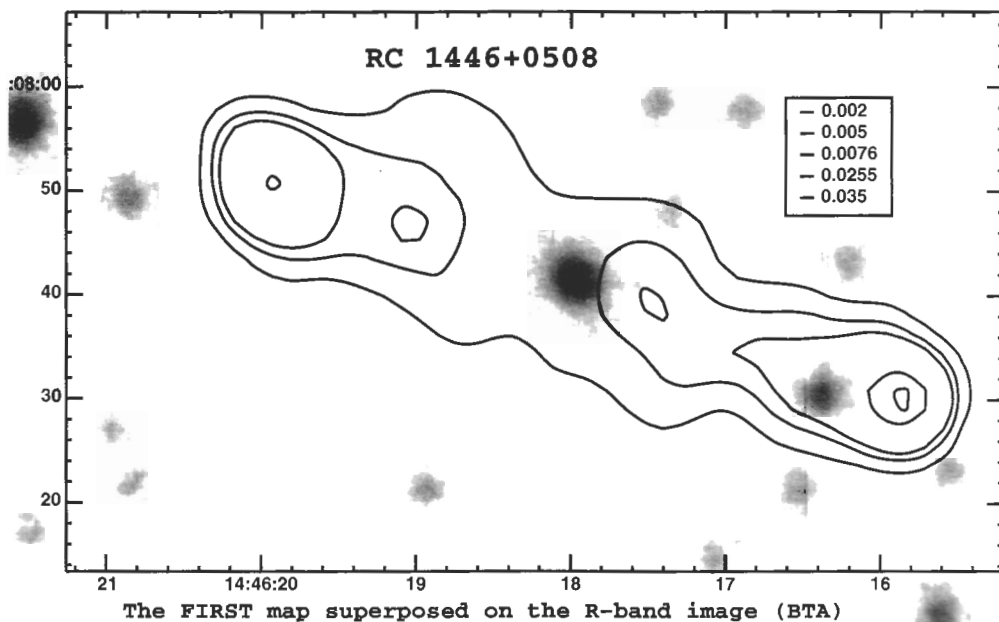
GAIA::Skycat

14:36:35.1 5:02:13 05000

zbe

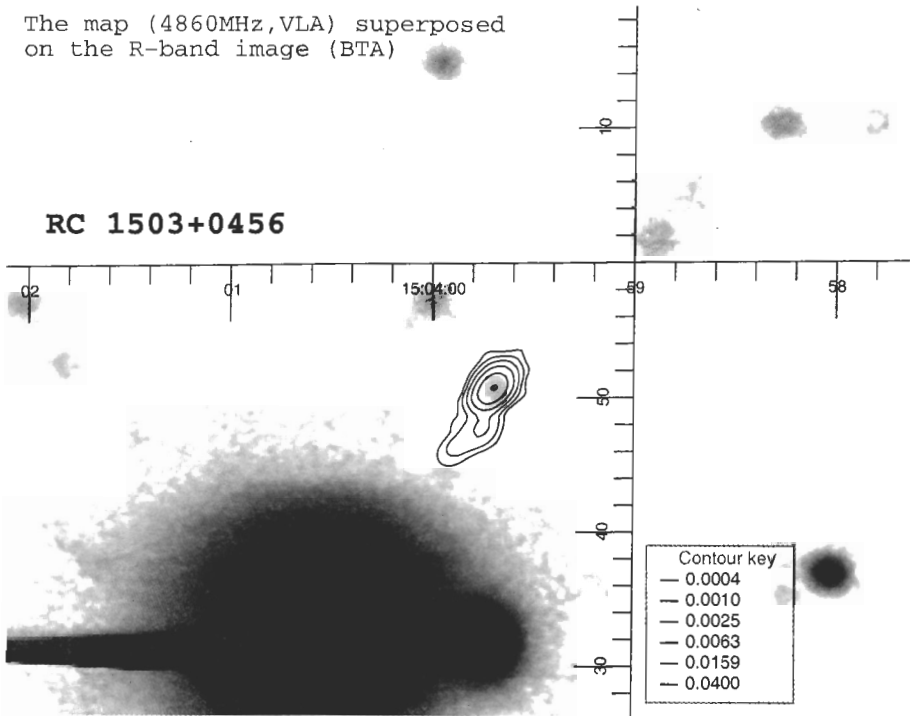
Jul 31, 2000 at 15:56:00





The map (4860MHz, VLA) superposed on the R-band image (BTA)

RC 1503+0456



GAIA::Skycat

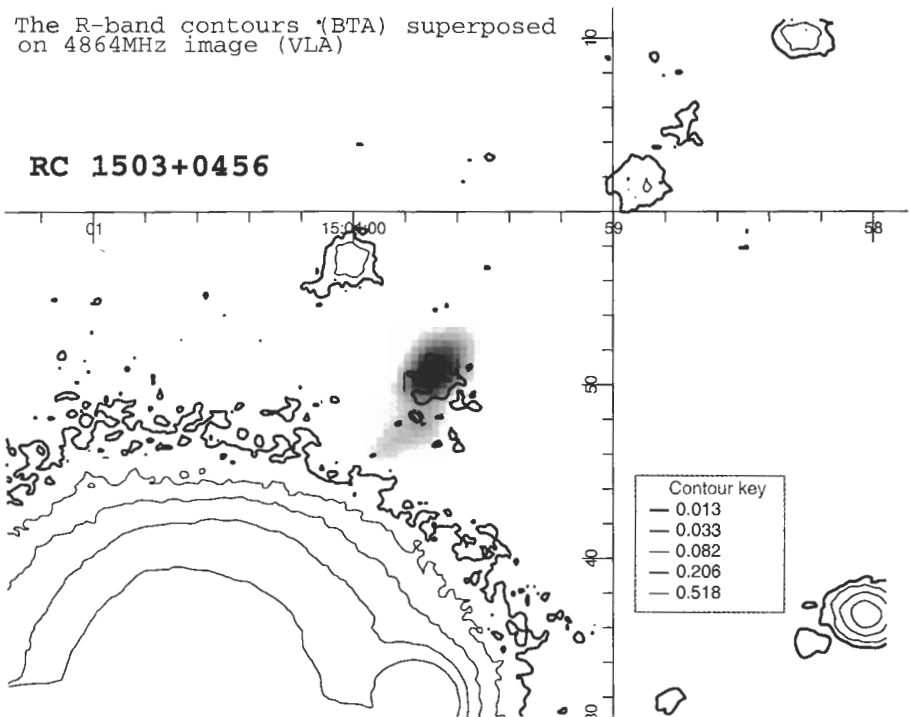
r1503rm.mc
15:03:59.7 4:57:30 J2000

zhe

Aug 14, 2000 at 12:41:40

The R-band contours (BTA) superposed on 4864MHz image (VLA)

RC 1503+0456

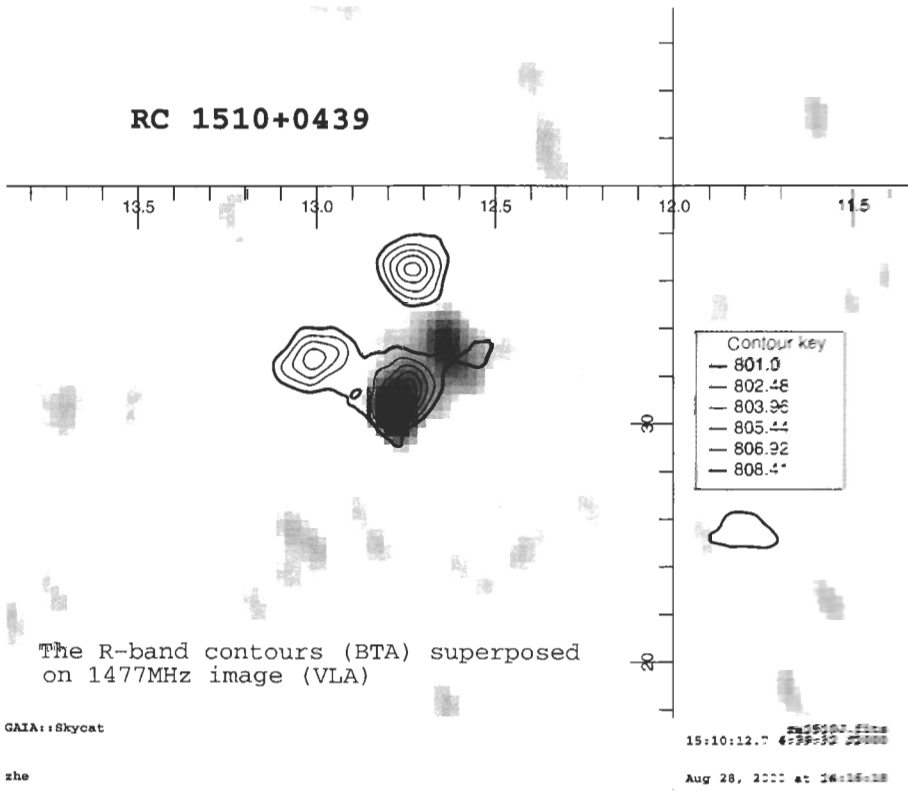
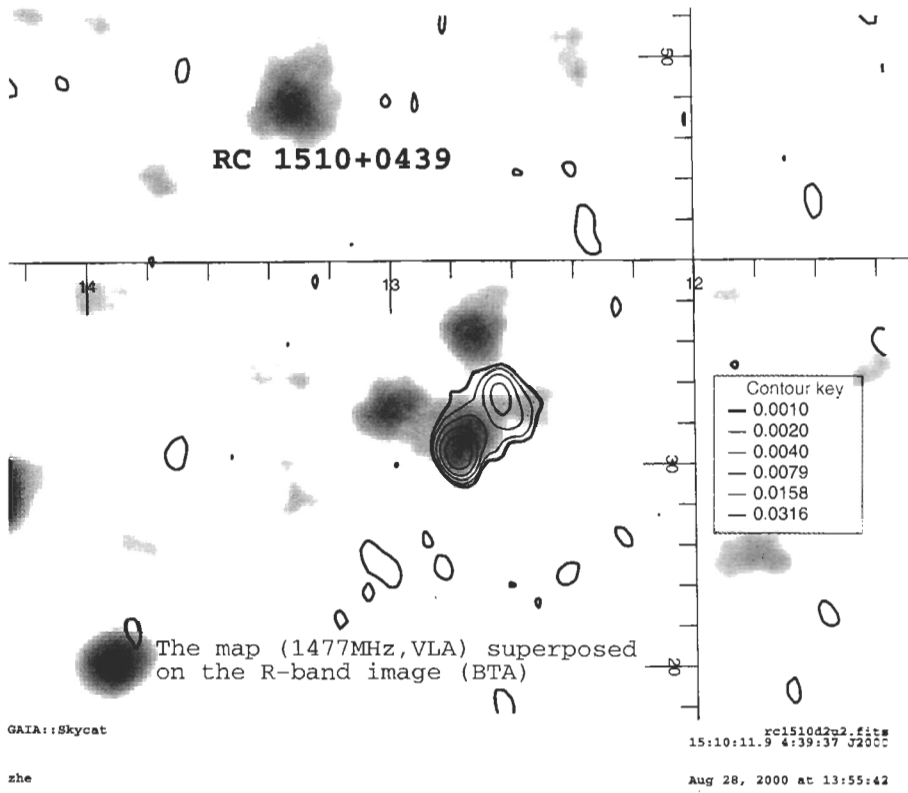


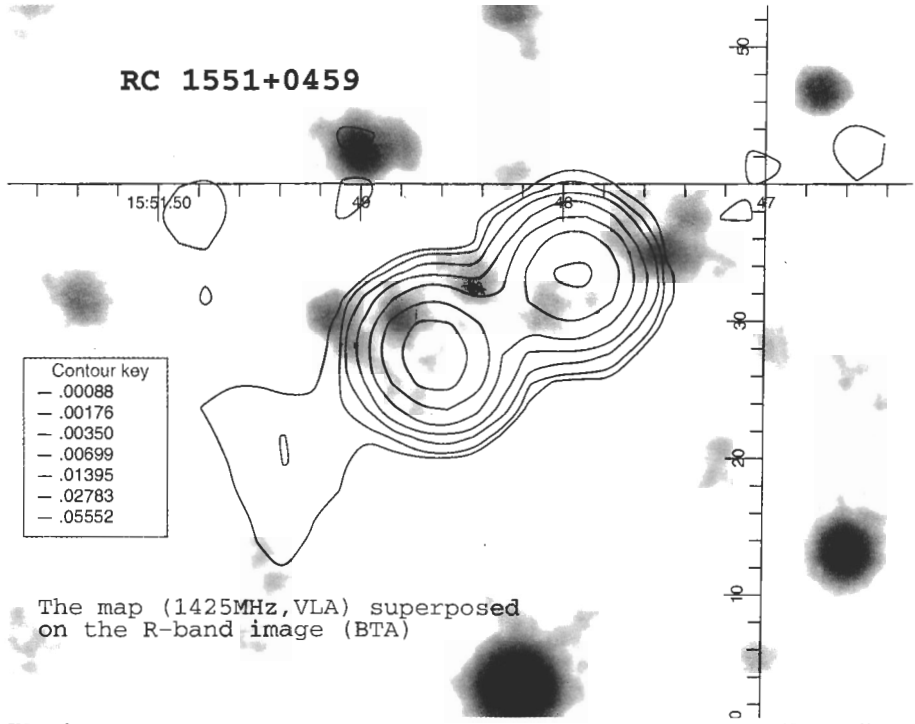
GAIA::Skycat

rm1503r.fits
15:03:59.7 4:56:51 J2000

zhe

Aug 14, 2000 at 14:37:01





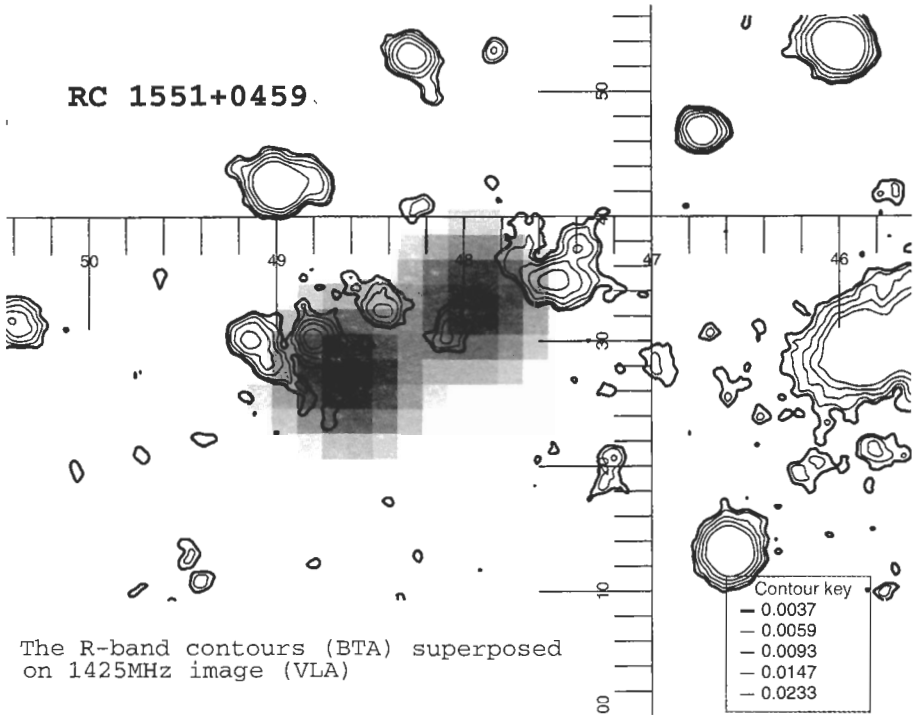
The map (1425MHz, VLA) superposed on the R-band image (BTA)

GAI:Skycat

rc1551d2u2.fits
15:51:48.6 4:59:31 J2000

zhe

Aug 23, 1998 at 12:08:09



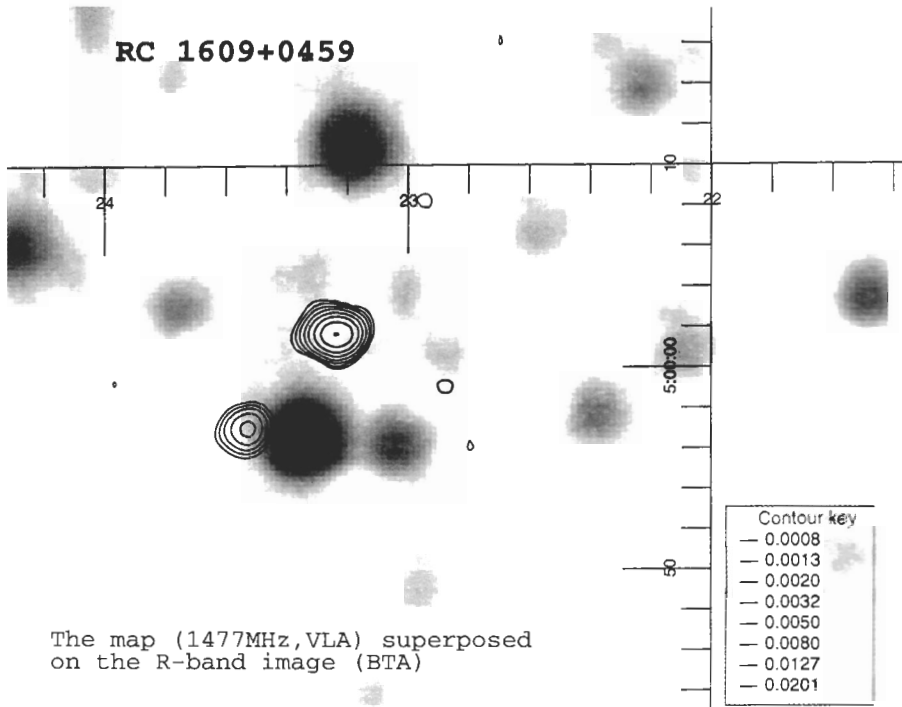
The R-band contours (BTA) superposed on 1425MHz image (VLA)

GAI:Skycat

rm1551J.fits
15:51:48.2 4:59:32 J2000

zhe

Aug 23, 1998 at 12:38:20

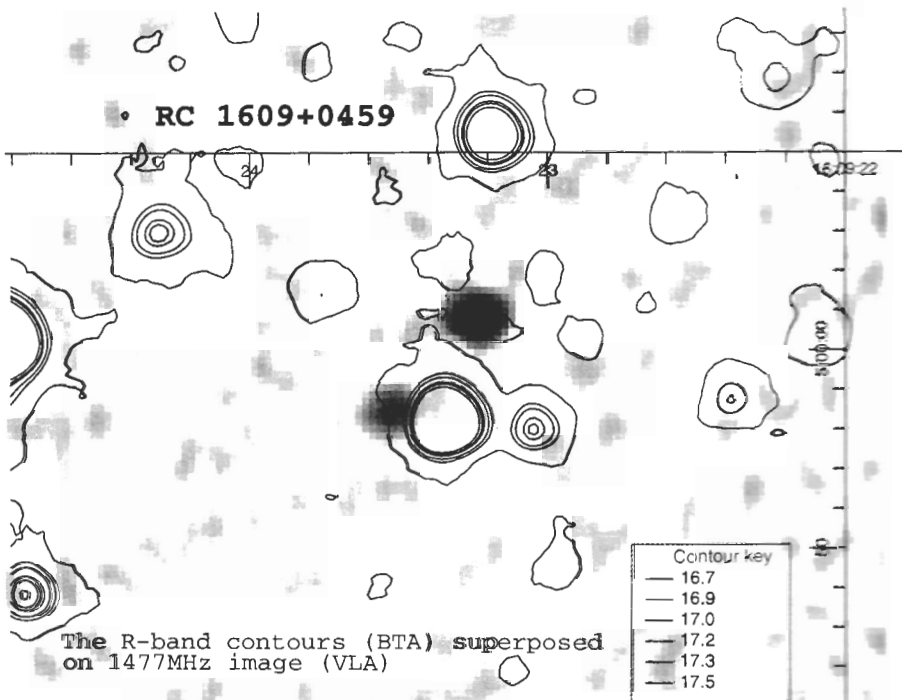


GAIA::Skycat

rc1609421.fits
16:09:23.3 5:00:06 J2000

zhe

Aug 14, 2000 at 15:43:15

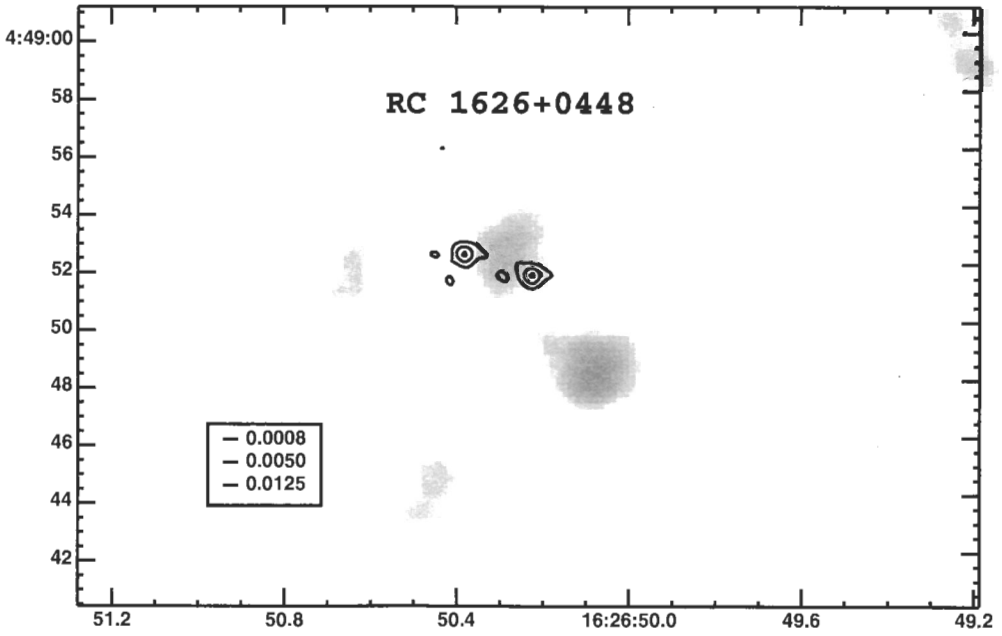


GAIA::Skycat

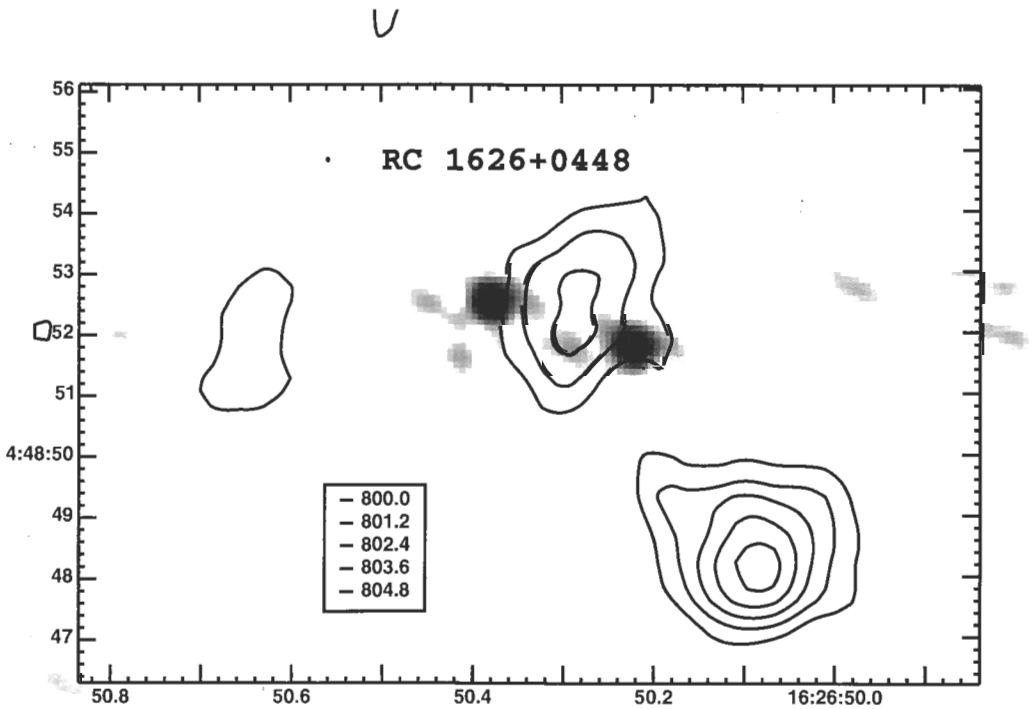
rc1609421.fits
16:09:23.4 4:59:59 J2000

zhe

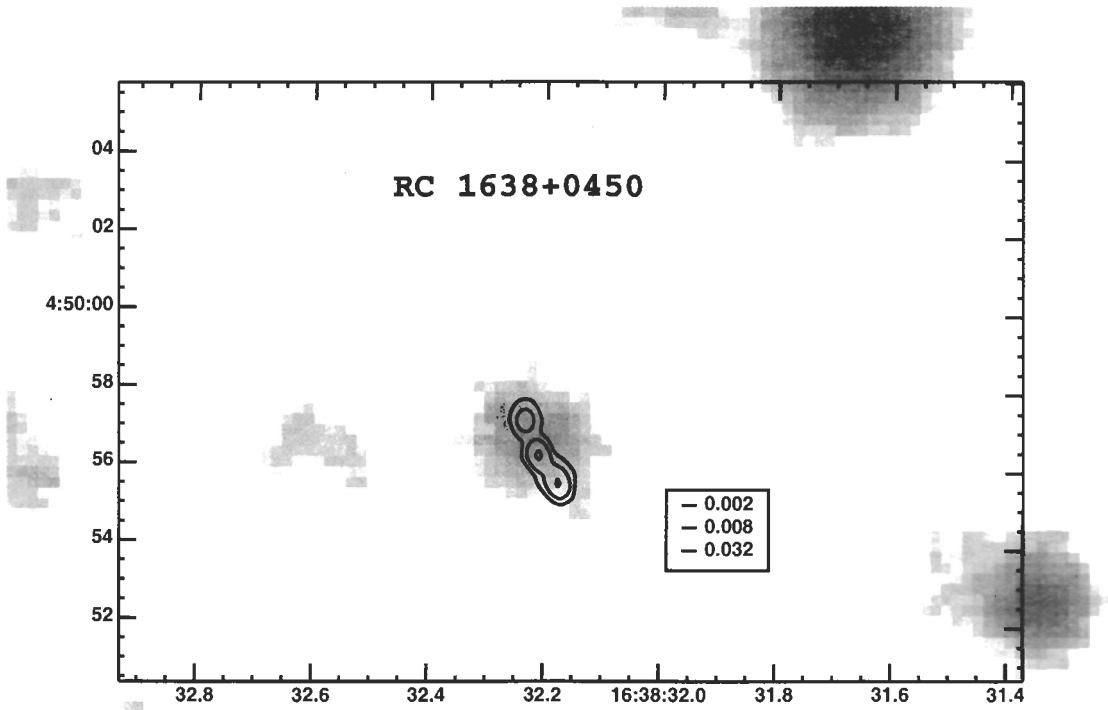
Aug 14, 2000 at 20:00:43



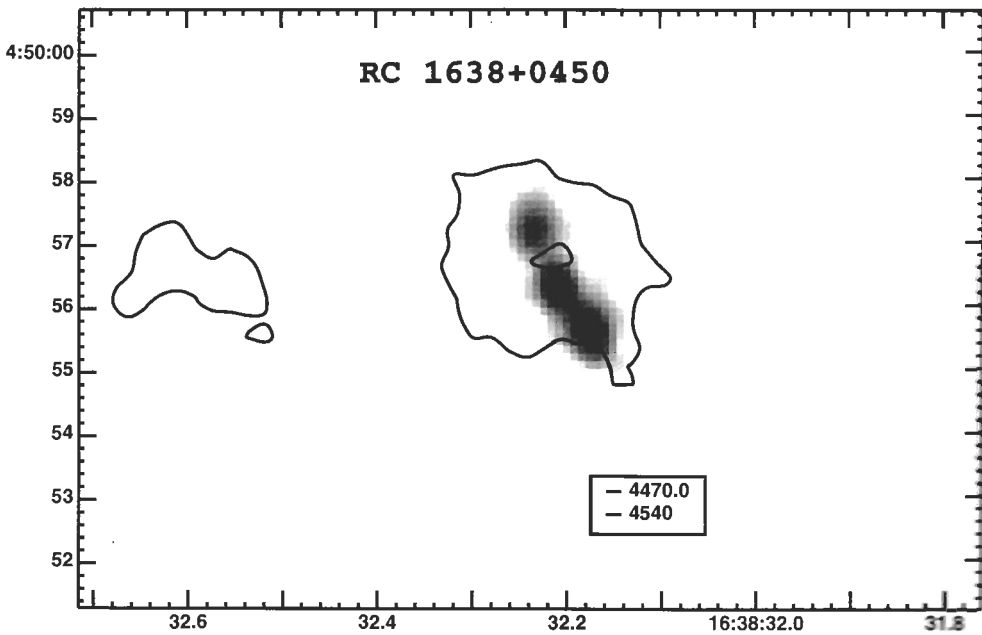
The map (4860MHz, VLA) superposed on the R-band image (BTA)



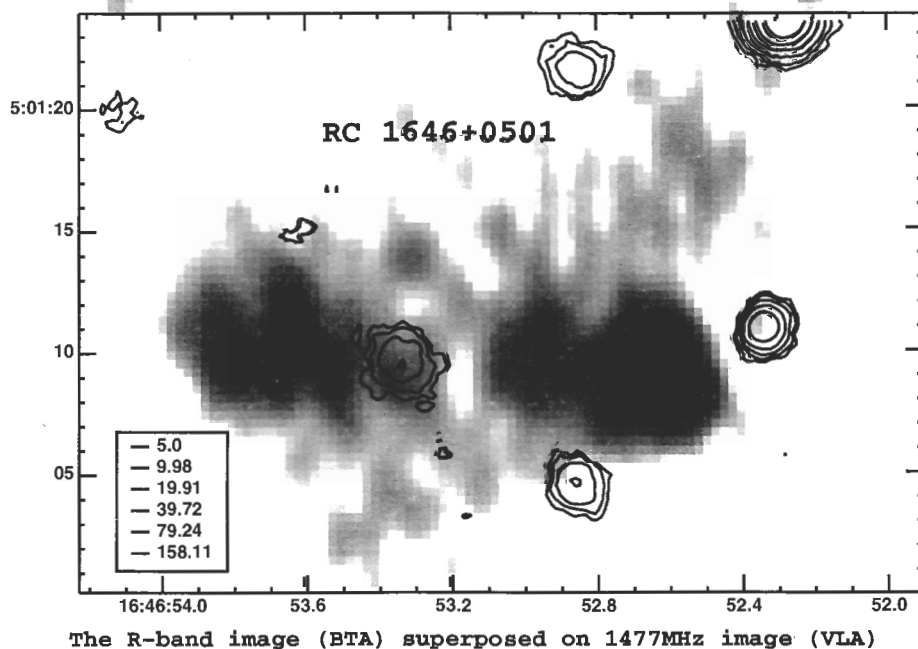
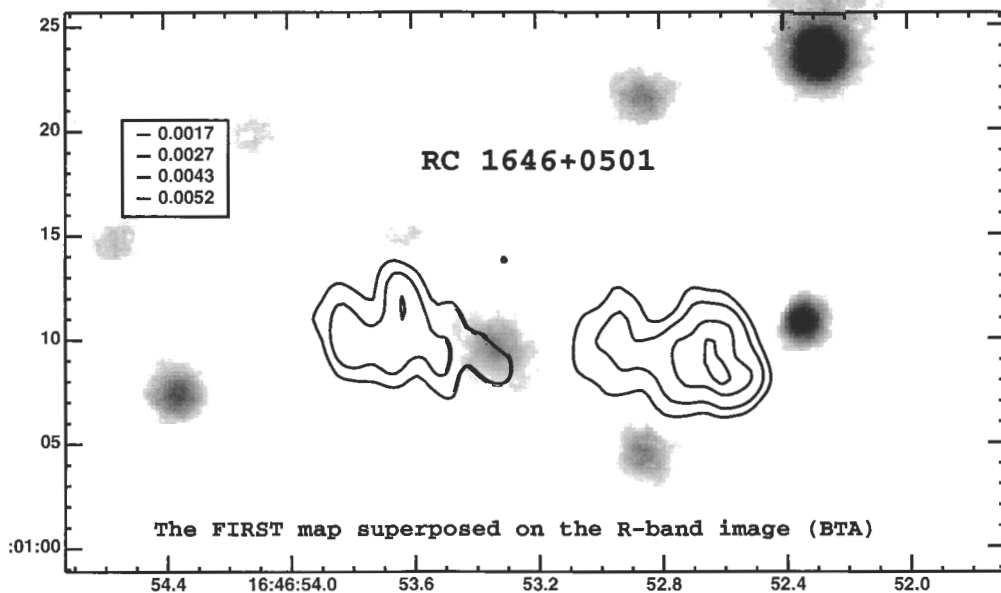
The R-band contours (BTA) superposed on 4860MHz image (VLA)



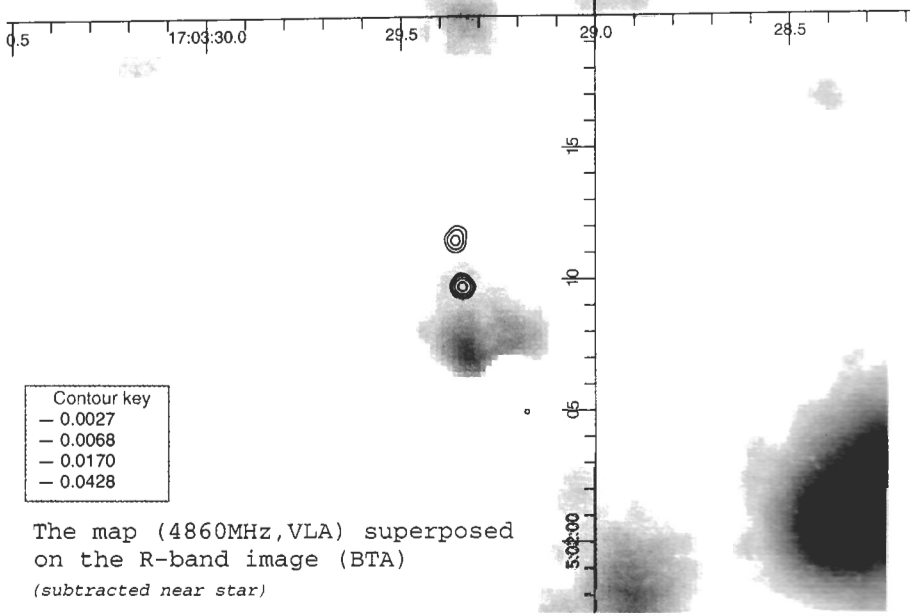
The map (4860MHz, VLA) superposed on the R-band image (BTA)



The R-band contours (BTA) superposed on 4860MHz image (VLA)



RC 1703+0502



Contour key
 - 0.0027
 - 0.0068
 - 0.0170
 - 0.0428

The map (4860MHz, VLA) superposed on the R-band image (BTA)
 (subtracted near star)

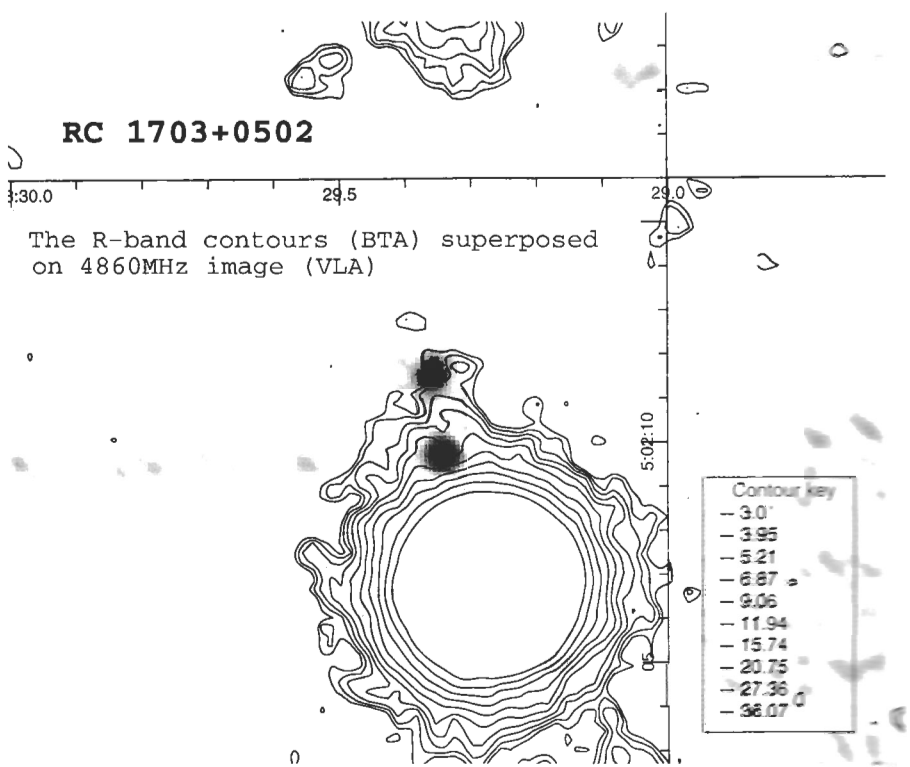
GALIA::Skycat

RC1703.fits
 17:03:29.3 5:02:07.23000

zhe

Nov 05, 1998 at 17:56:32

RC 1703+0502



The R-band contours (BTA) superposed on 4860MHz image (VLA)

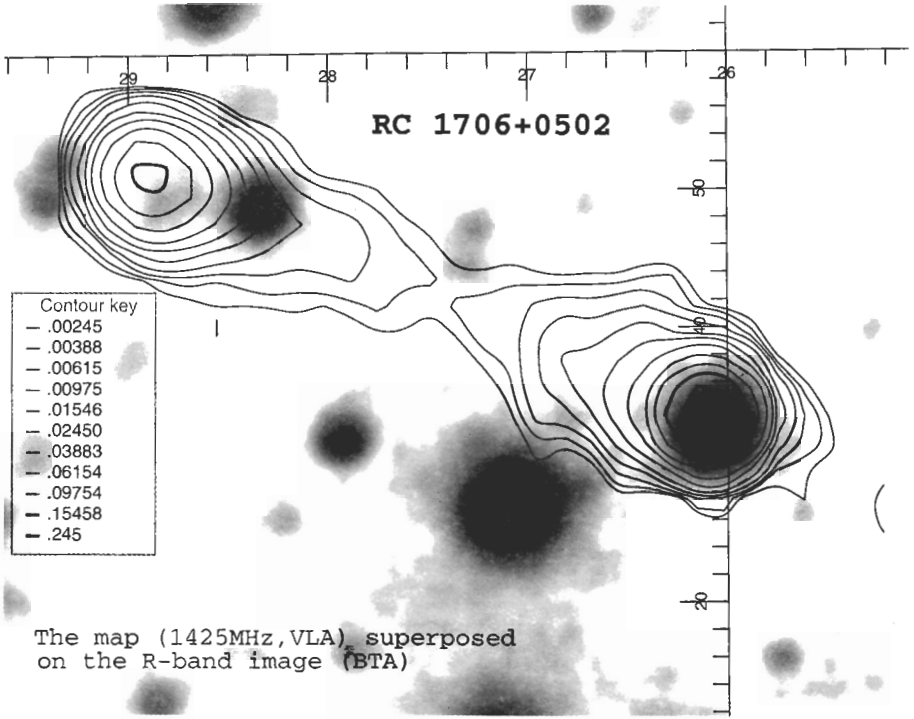
Contour key
 - 3.0
 - 3.95
 - 5.21
 - 6.87
 - 9.06
 - 11.94
 - 15.74
 - 20.75
 - 27.36
 - 36.07

GALIA::Skycat

RC1703.fits
 17:03:29.3 5:02:10.23000

zhe

Nov 05, 1998 at 18:31:40

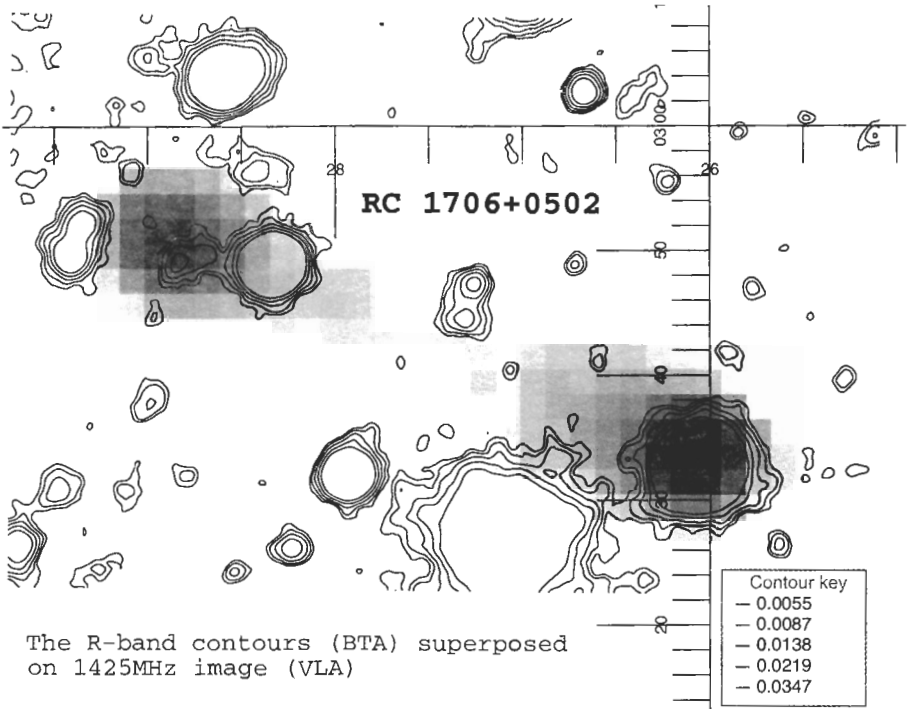


GAIA::Skycat

rc1706d2u2.fits
17:06:26.4 5:02:39 J2000

zhe

Aug 23, 1998 at 14:31:31

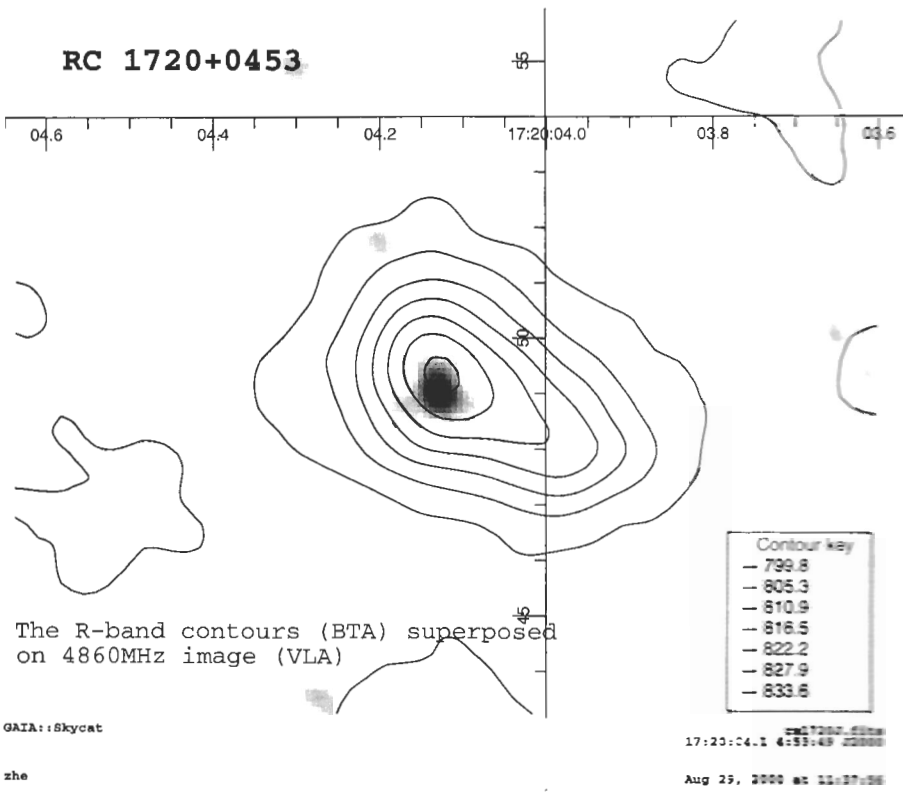
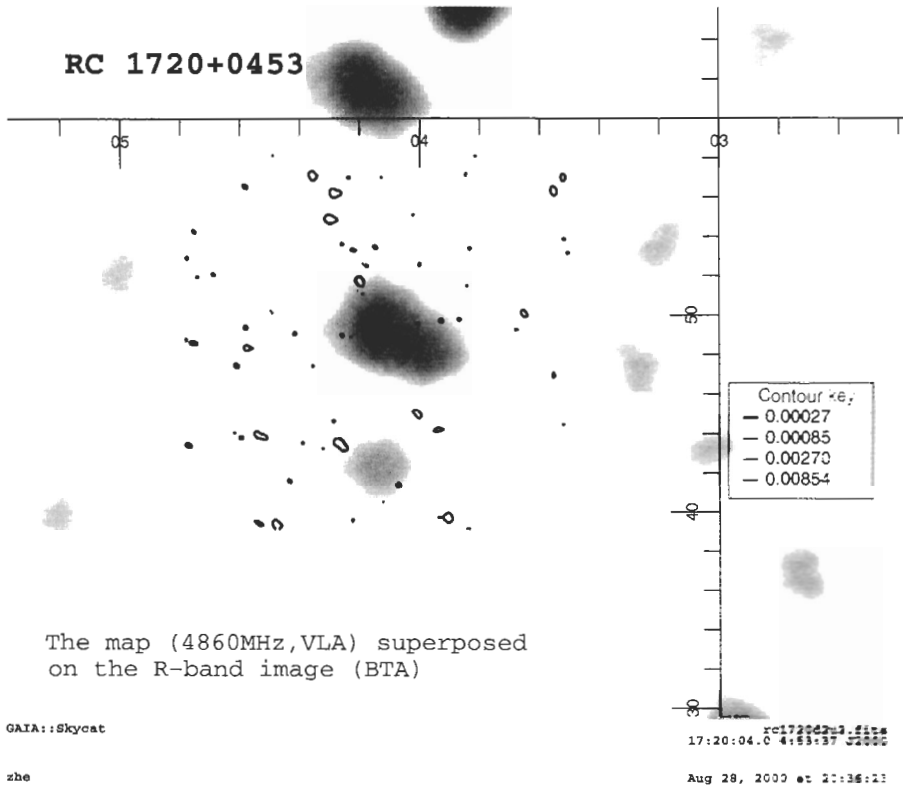


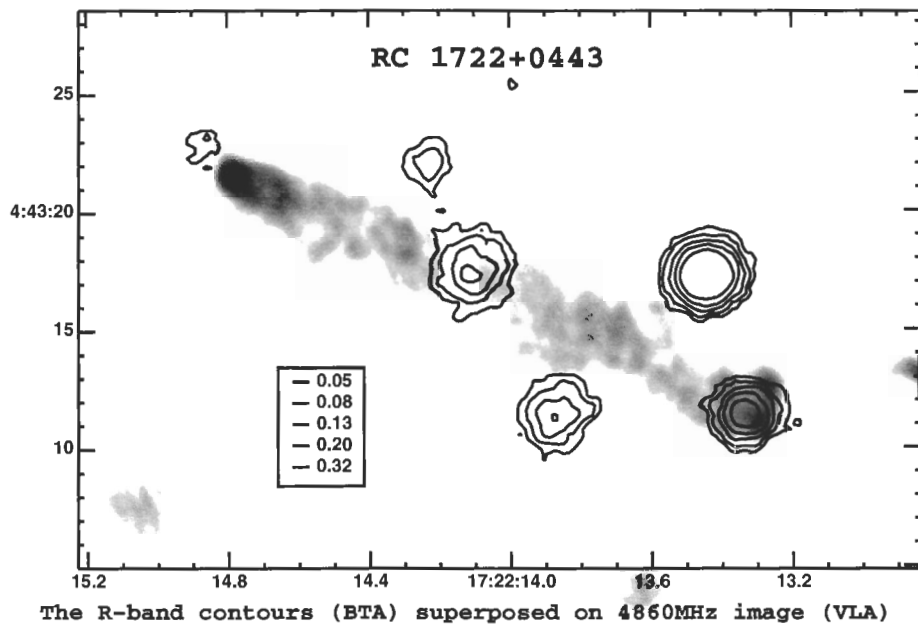
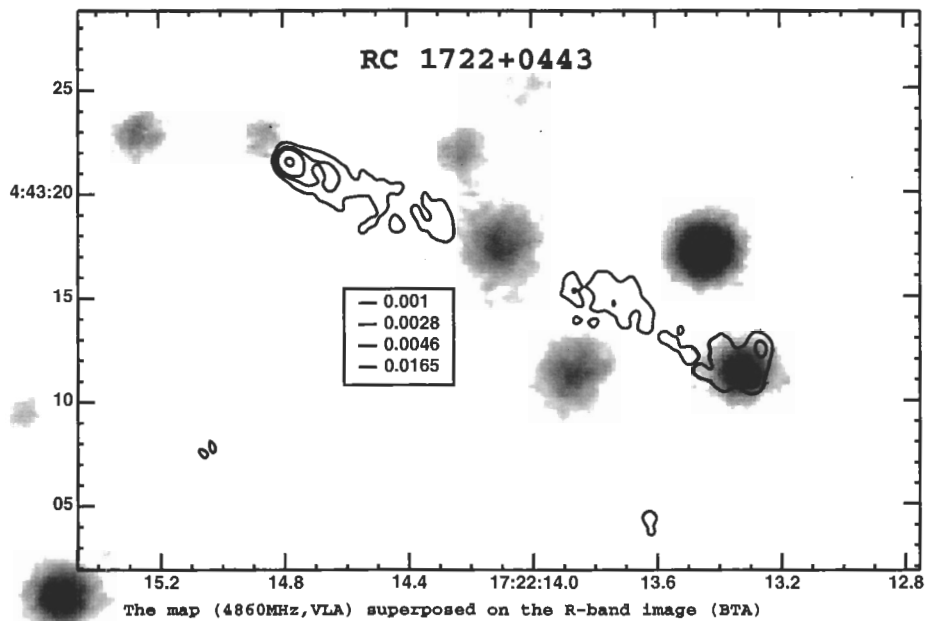
GAIA::Skycat

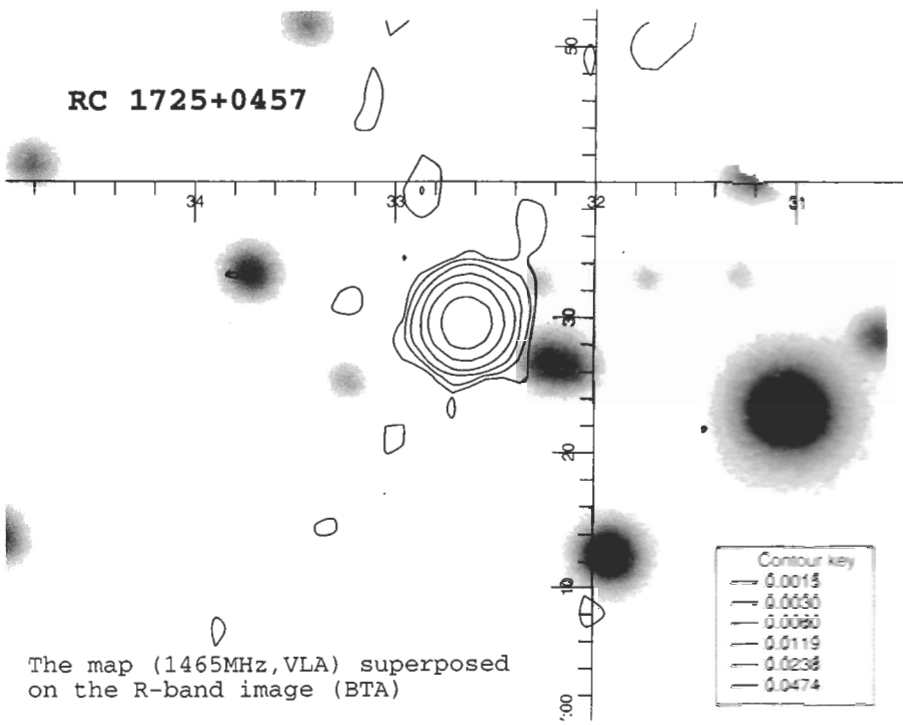
rm1706J.fits
17:06:27.2 5:02:44 J2000

zhe

Aug 23, 1998 at 15:37:48





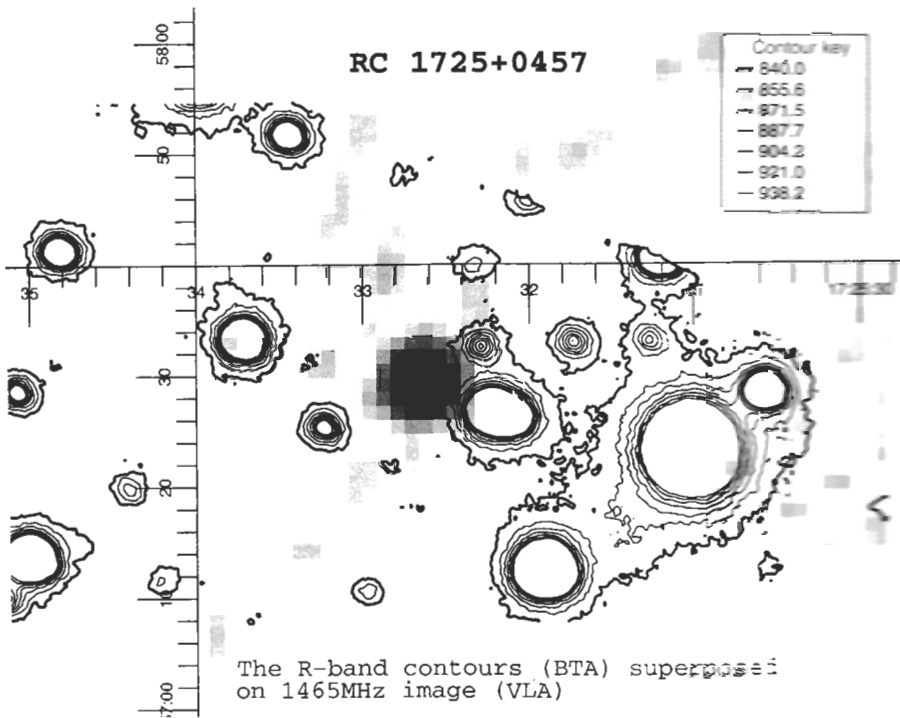


GAIA: Skycat

17:25:00 4:57:29 22000

zhe

Feb 22, 1998 at 20:59:27

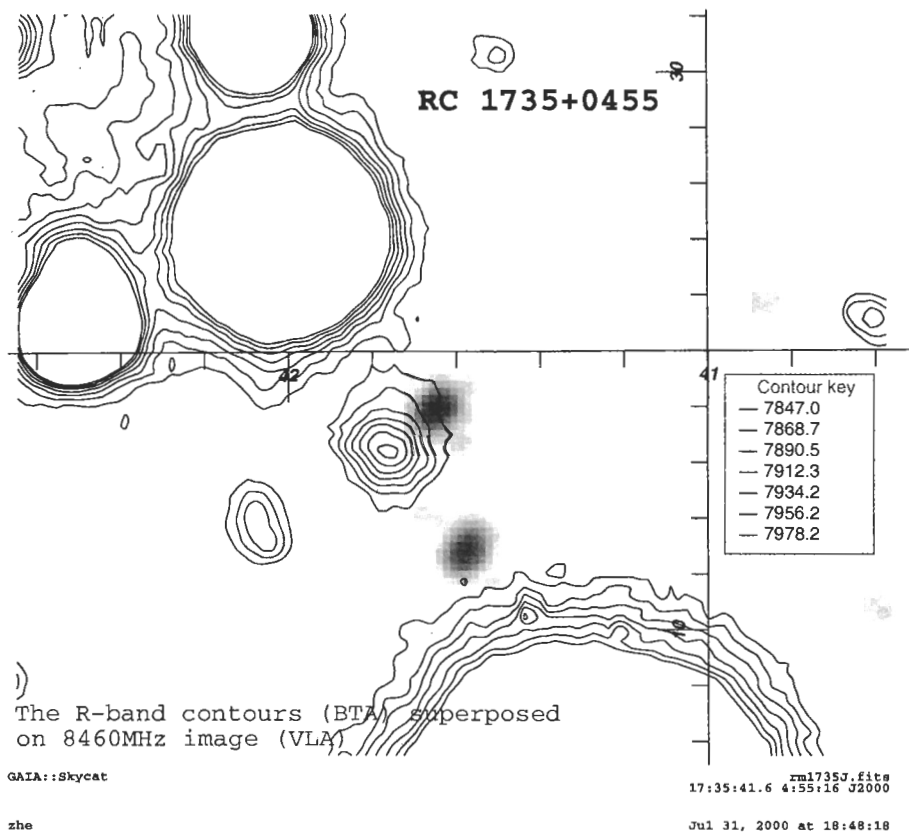
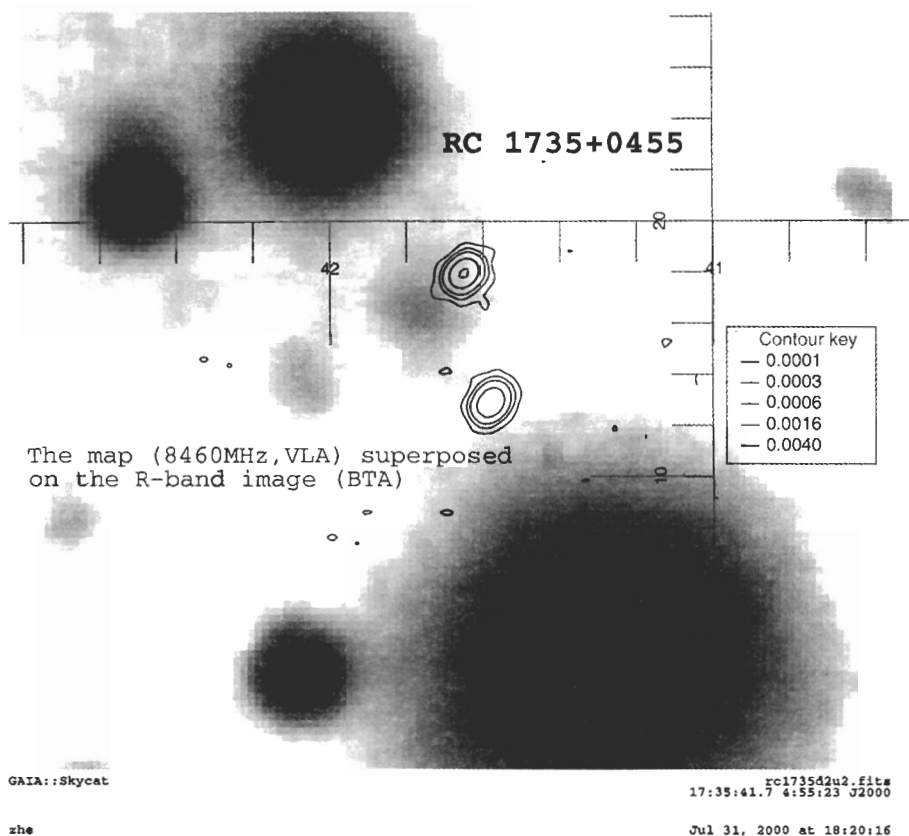


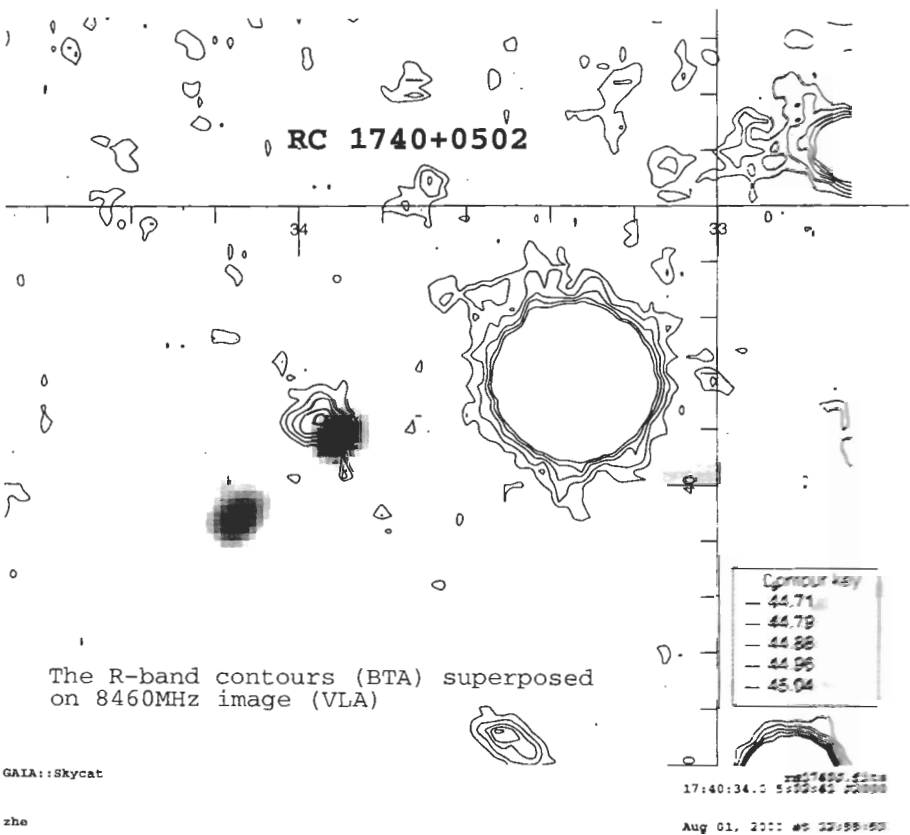
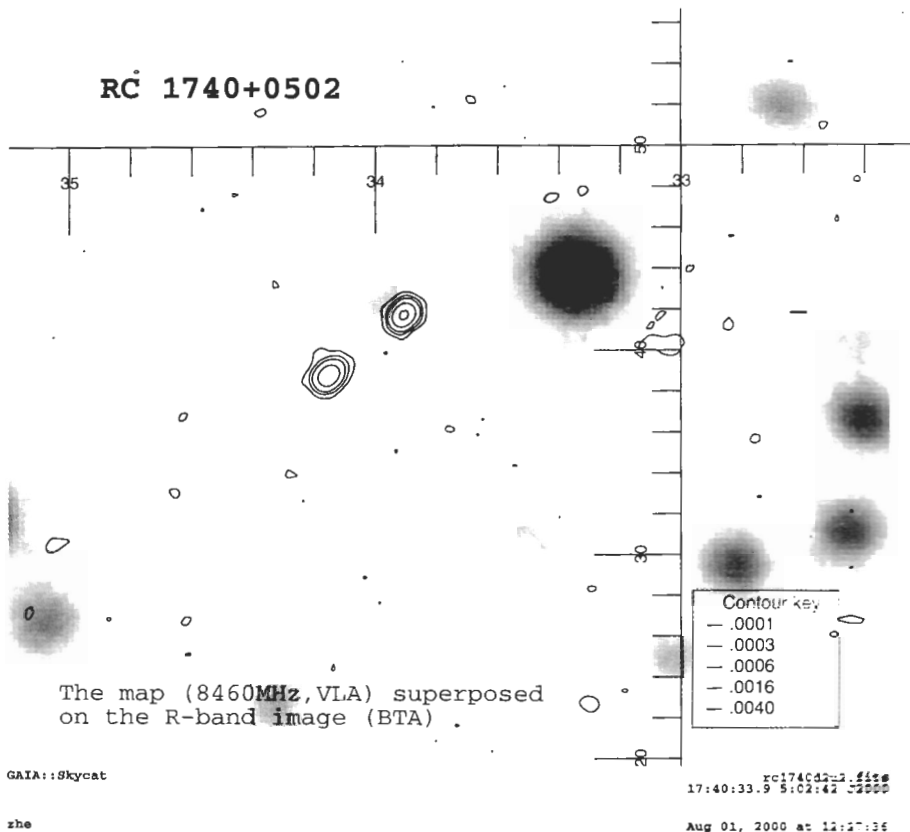
GAIA: Skycat

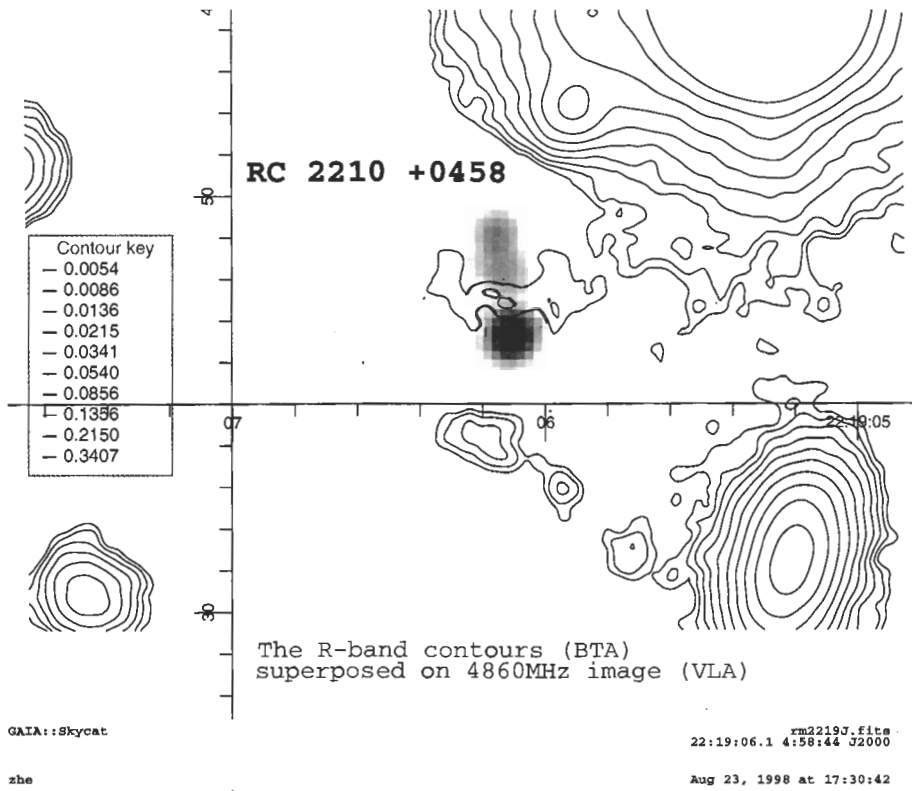
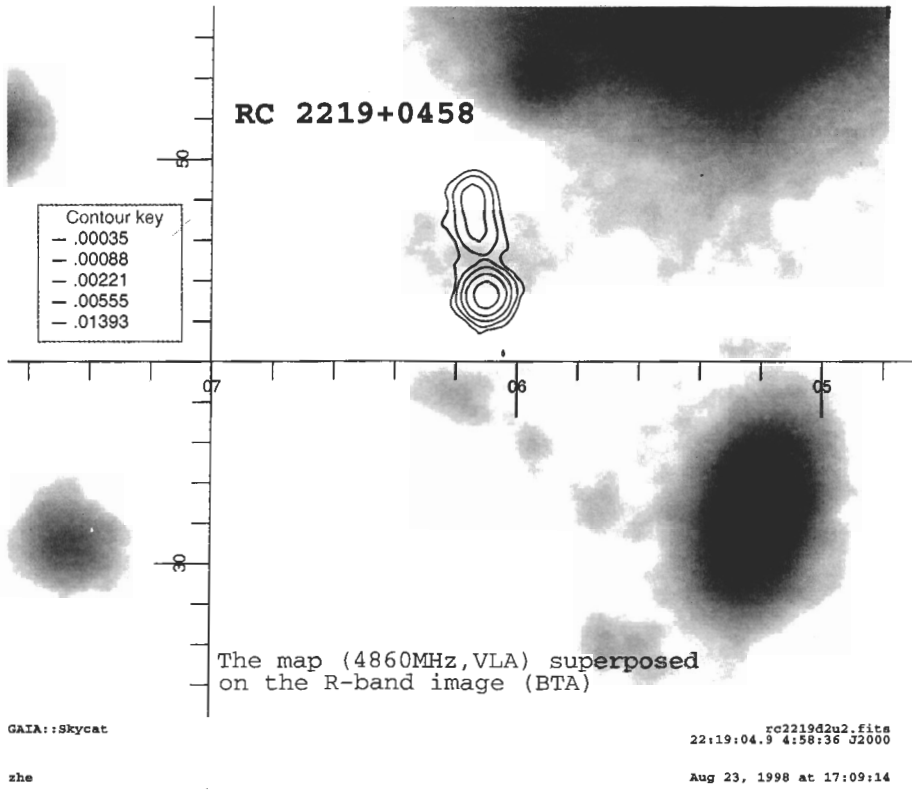
17:25:00.5 4:57:29 22000

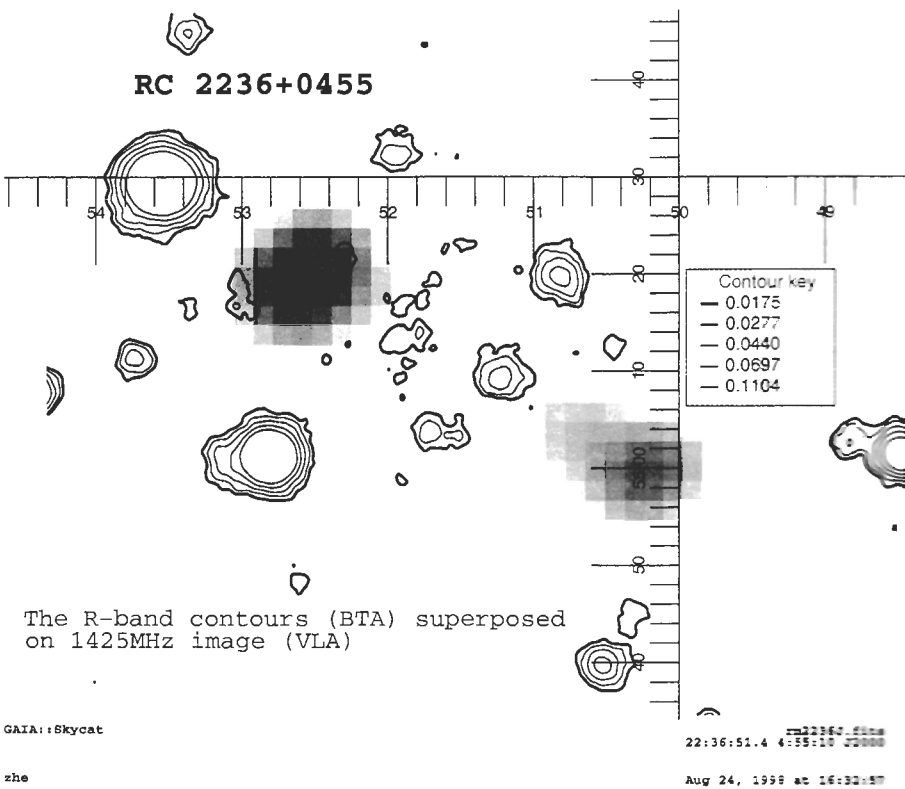
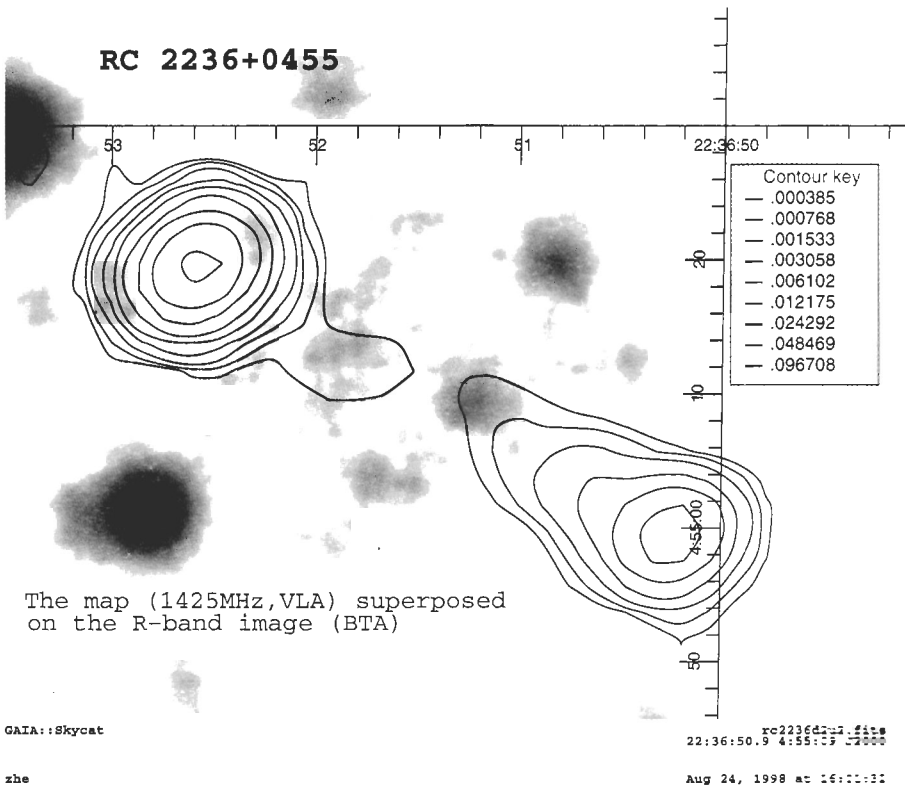
zhe

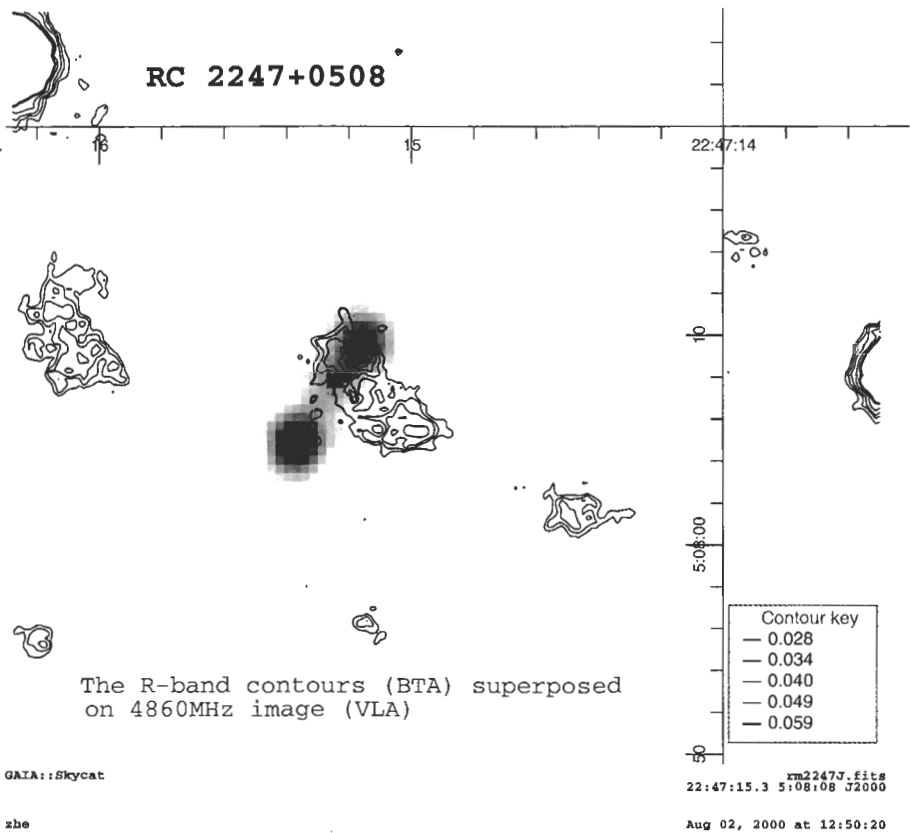
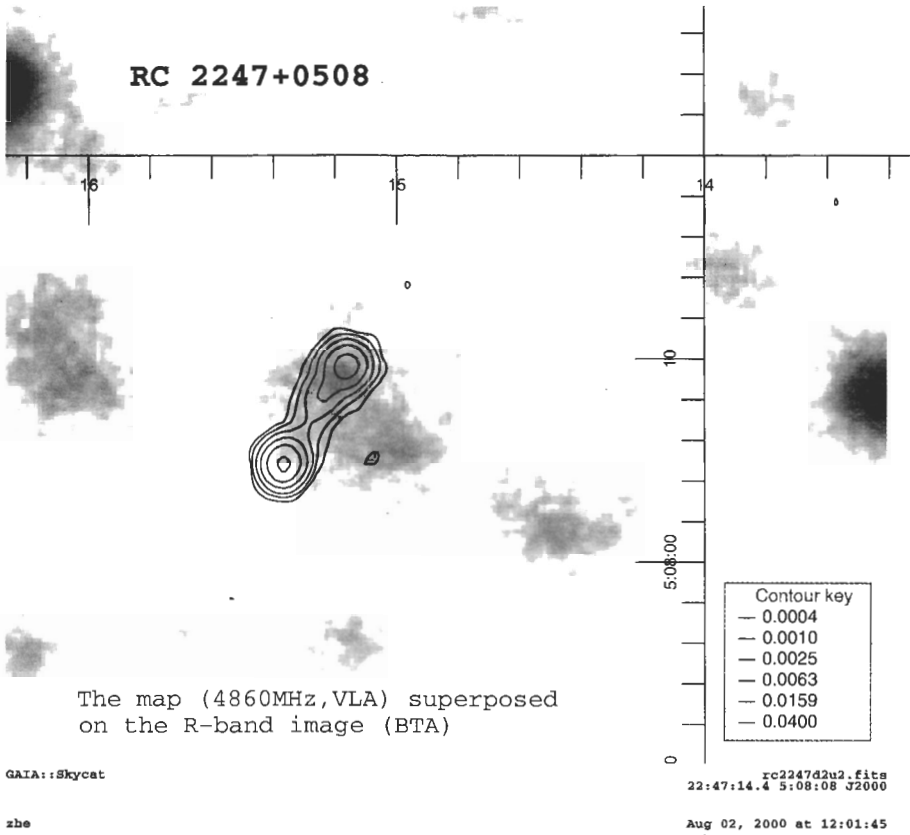
Feb 24, 1998 at 00:40:00











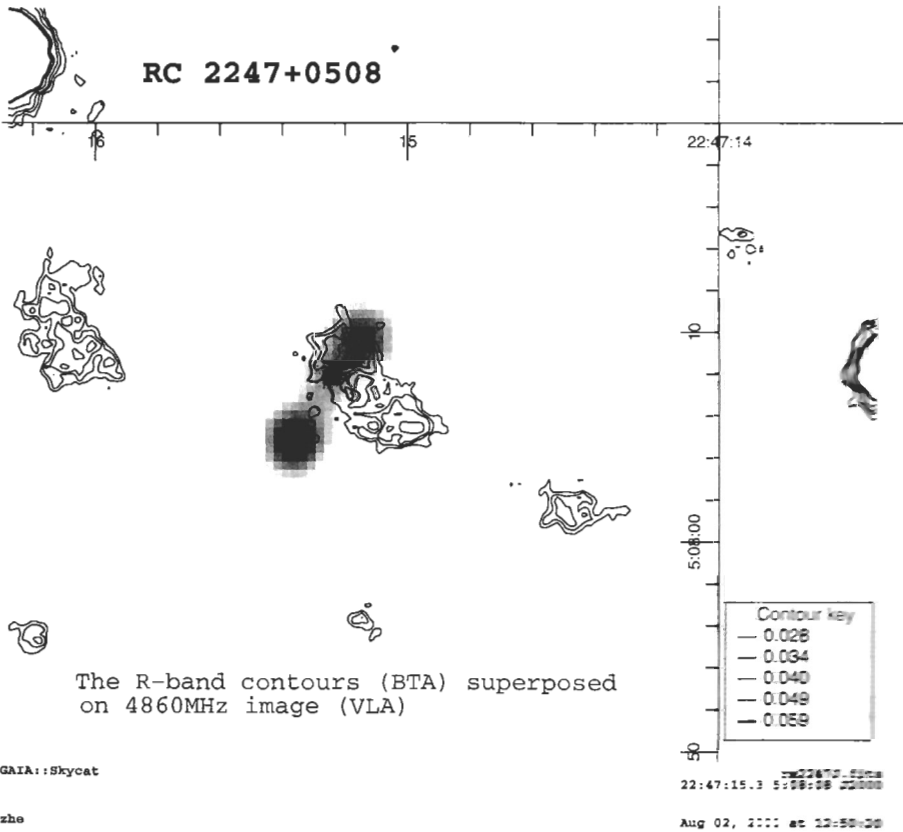
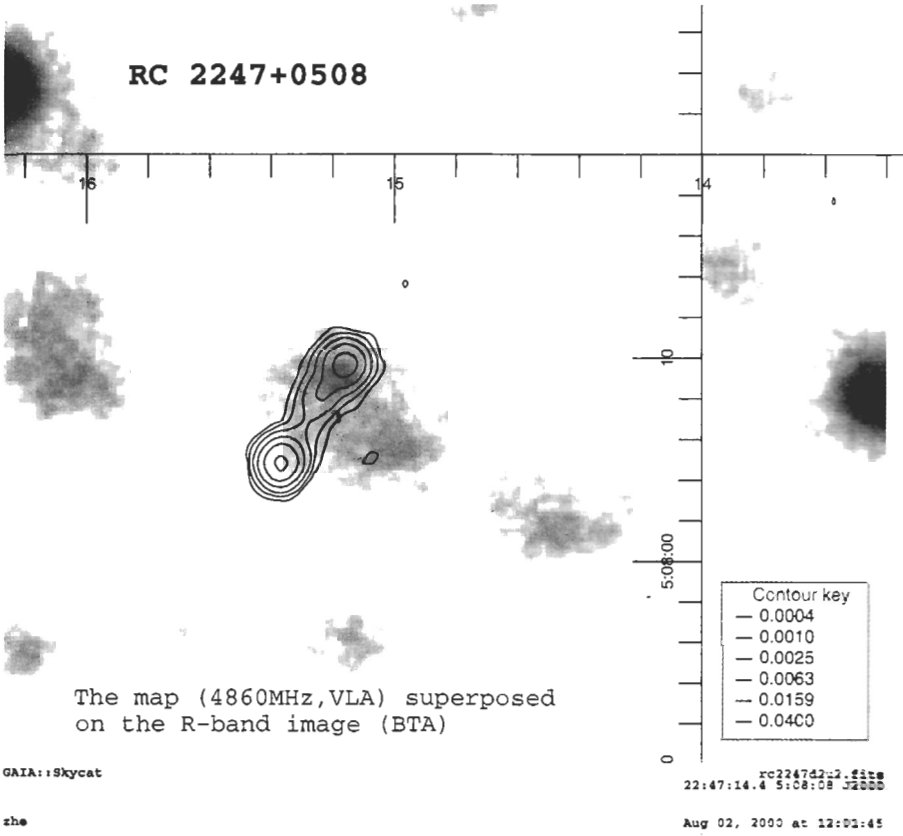


Fig. 6. Fitted SED models and corresponding probability functions for RC objects.

